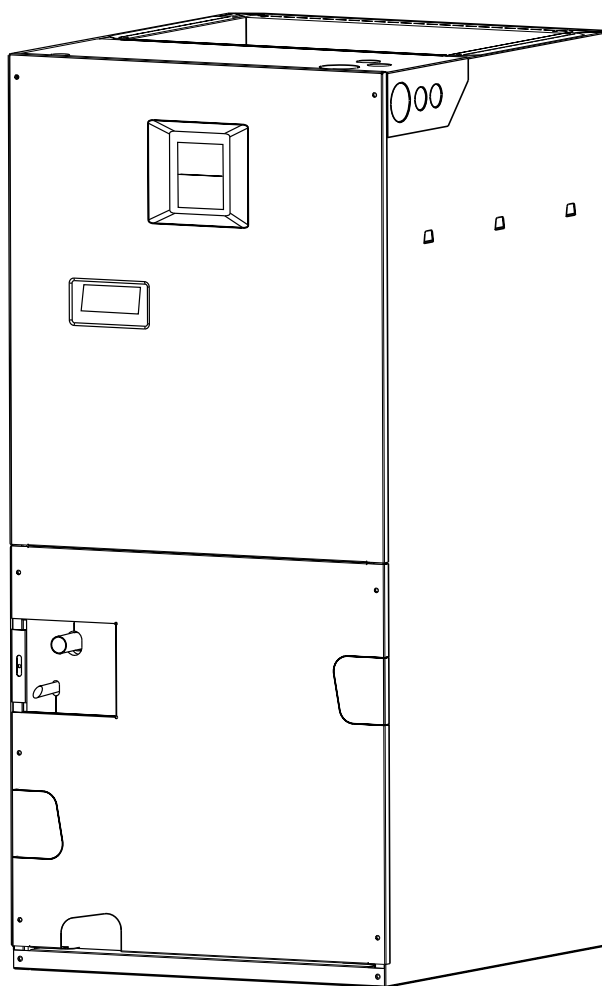


B3VM Series Variable Speed Air Handler 10 - 14 SEER Residential System 18,000 - 60,000 Btuh (Heat Pump & Air Conditioner)

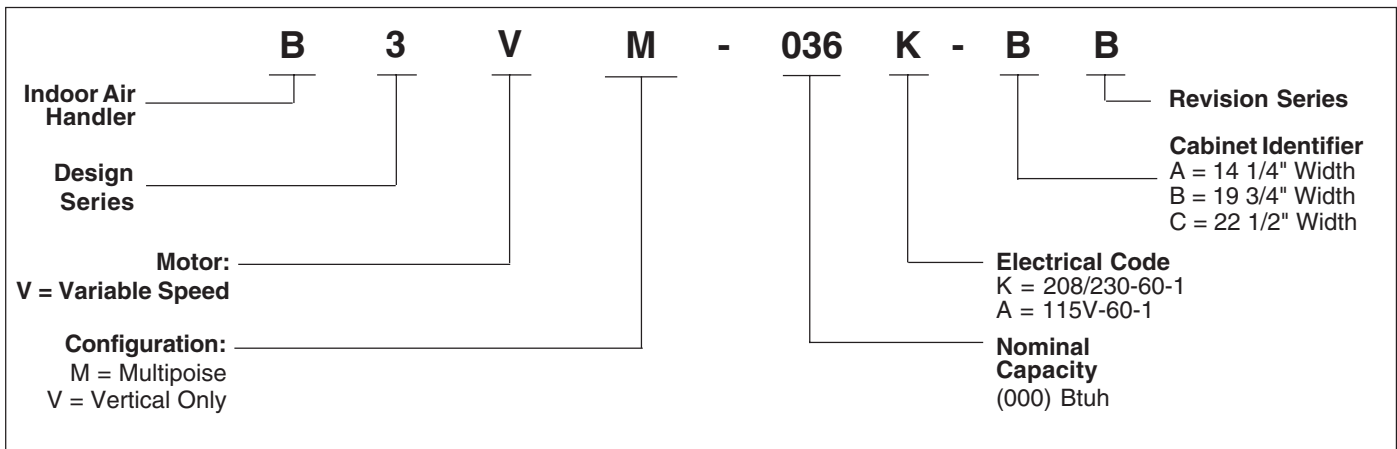
The B3VM Series of air handlers, when combined with our heat pump or air conditioner, offers a full line of quality, split system heating and cooling equipment.

FEATURES and BENEFITS

- **Increased Efficiencies**-Air conditioning and heat pump efficiencies up to 14 SEER and 8.5 HSPF.
- **ECM Variable Speed Motor** - new technology allows for 12 selected cooling airflows and 4 heating airflows to match any application.
- **Quiet Blower Operation** - Extra quiet and smooth blower on and off cycles.
- **Constant airflow** - Motor automatically adjusts to different static loads.
- **Pre-programmed delay profile** - Increase efficiency and comfort.
- **Reduced air stratification** - This results in improved air quality by optimizing humidity removal and filtration capabilities.
- **Multi-poised** - Can be used in horizontal, upflow, down-flow and vertical applications.
- **Built in Filter Rack** - makes the air handler easy to service.
- **Plug-in Heater Kits** - Available in 5 kw through 20 kw (Not for use in 115 Volt units)
- **Breaker Accessibility** - Breaker accessible from the front of the unit when heater is applied.
- **Plastic Drain Pan** - Provides corrosion resistance.
- **Durable Cabinet** - Galvanized steel with a polyurethane finish. The finish will endure 950 hours of salt spray and resist corrosion 50% better than comparable units.
- **8 Year Limited Parts Warranty** - Proven to be a major benefit to the consumer.



MODEL IDENTIFICATION CODE



SPECIFICATIONS

Model B3VM	036-B	048-B	060-C	062-C	066-C
Refrigerant Flow Control	.067	.080	.093	.085	.103
Maximum Available Auxiliary Heat (kw)	20	20	20	20	20
Nominal Blower Size (D x W)	11 x 8	11 x 8	11 x 10	11 x 10	11 x 10
Variable Speed Motor HP	1/2	1/2	3/4	3/4	3/4
Rated External Static Pressure (in. W.C.)	.35	.35	.40	.40	.40
CFM*	720 - 1450	720 - 1450	1075 - 2150	1075 - 2150	1075 - 2150
Filter Size**	18 x 20 x 1	18 x 20 x 1	20 x 20 x 1	20 x 20 x 1	20 x 20 x 1
Approximate Shipping Weight (lbs.)	120	120	160	165	170

NOTES:

- 1) Units are 10 SEER air conditioner ready as shipped.
- 2) See current ARI Directory for certified combinations and ratings.

*Field selectable in 12 steps

ACCESSORIES

Accessory Kit Description	Size		Order Number
	B	C	
Downflow Adaptor Kit	X		917343A
Single Circuit Adaptor Kit	X	X	913874
Humidistat	X	X	913769
Bonnet Temperature Control	X	X	913866

**240V Single Phase Electric Heat Kits

KW	No. of Stages	Approved for Cabinet	Order Number	
			with Circuit Breaker(s)	w/o Circuit Breaker(s)
5	1	A, B, C	917367B	917366B
8	1	A, B, C	917370B	917368B
10	1	A, B, C	917374B	917372B
12	1	A, B, C	904198B	N/A
15	1	B, C	903959B	N/A
20	1	B, C	903960B	N/A

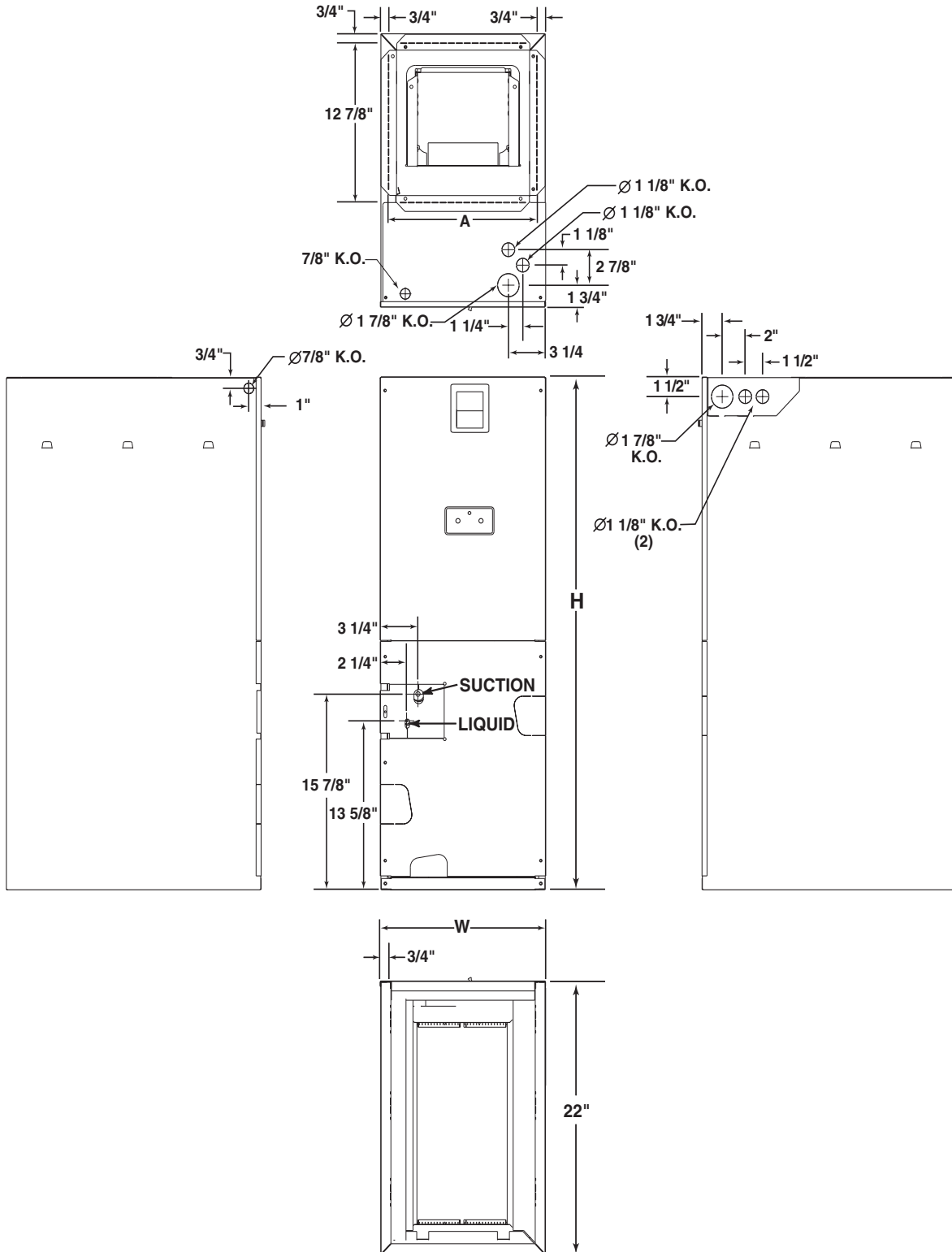
**240V 3-Phase Electric Heat Kits

KW	No. of Stages	Approved for Cabinet	Order Number	
			with Circuit Breaker(s)	w/o Circuit Breaker(s)
9	1	B, C	917449	N/A
15	1	B, C	917450	N/A

**Not for use with 115 Volt units

DIMENSIONS

Models B3VM	H	W	A	Refrigerant Connections		Filter Size	Supply Air Duct Dimensions
				Suction Dia.	Liquid Dia.		
036K-B	43 1/2	19 3/4	18 1/4	3/4	3/8	18 x 20 x 1	12 7/8 x 18 1/4
048K-B	43 1/2	19 3/4	18 1/4	3/4	3/8	18 x 20 x 1	12 7/8 x 18 1/4
060K-C	43 1/2	22 1/2	21	7/8	3/8	20 x 20 x 1	12 7/8 x 21
062K-C	53 1/2	22 1/2	21	7/8	3/8	20 x 20 x 1	12 7/8 x 21
066K-C	53 1/2	22 1/2	21	7/8	3/8	20 x 20 x 1	12 7/8 x 21



Basic Airflow Setting

B-Cabinet

CFM	Switch Number				Nominal Capacity					
	1	2	3	4	1.5	2.0	2.5	3.0	3.5	4.0
720	0	0	0	1						
800	0	0	0	0						
860	1	0	0	1						
885	0	0	1	0						
960	1	0	0	0						
1060	1	0	1	0						
1125	0	1	0	1						
1185	1	1	0	1						
1250	0	1	0	0						
1315	1	1	0	0						
1375	0	1	1	0						
1450	1	1	1	0						

C-Cabinet

CFM	Switch Number				Nominal Capacity			
	1	2	3	4	3.0	3.5	4.0	5.0
1075	0	0	0	1				
1140	1	0	0	1				
1225	0	0	0	0				
1300	1	0	0	0				
1380	0	0	1	0				
1465	1	0	1	0				
1555	0	1	0	1				
1665	1	1	0	1				
1775	0	1	0	0				
1900	1	1	0	0				
2000	0	1	1	0				
2150	1	1	1	0				

Note: 1=ON, 0=OFF

ELECTRICAL DATA

Model Number H4HK	Voltage	KW	Standard Air Handler						Variable Speed Air Handler					
			Min. Circuit Ampacity			Max. Over-Current Protection			Min. Circuit Ampacity			Max. Over-Current Protection		
			Circuit A	Circuit B	Single Circuit	Circuit A	Circuit B	Single Circuit	Circuit A	Circuit B	Single Circuit	Circuit A	Circuit B	Single Circuit
005H-XXB	240	4.8	-	-	30.0	-	-	30	-	-	34.8	-	-	40
008H-XXB	240	7.5	-	-	44.1	-	-	50	-	-	47.8	-	-	50
010H-XXB	240	9.6	-	-	55.0	-	-	60	-	-	58.8	-	-	60
012H-XXB	240	11.6	35.2	30.2	65.4	40	40	70	39.0	30.2	69.2	40	40	70
015H-XXB	240	14.4	55.0	25.0	80.0	60	30	90	59.3	25.0	83.8	60	30	90
020H-XXB	240	19.2	55.0	50.0	105.0	60	50	125	59.3	50.0	108.8	60	50	125
005H-XXB	208	3.6	-	-	26.6	-	-	30	-	-	30.9	-	-	40
008H-XXB	208	5.6	-	-	38.8	-	-	40	-	-	43.1	-	-	50
010H-XXB	208	7.2	-	-	48.3	-	-	50	-	-	52.5	-	-	60
012H-XXB	208	8.8	31.4	26.4	57.9	40	30	60	35.2	26.4	61.6	40	30	70
015H-XXB	208	10.8	48.3	21.6	69.7	50	30	70	52.5	21.6	74.2	60	30	80
020H-XXB	208	14.4	48.3	43.3	91.5	50	50	100	52.5	43.3	95.8	60	50	100
009Q-XXB	240	9.0	-	-	32.4	-	-	35	-	-	35.8	-	-	40
015Q-XXB	240	14.4	-	-	48.7	-	-	50	-	-	52.1	-	-	60
009Q-XXB	208	6.8	-	-	28.8	-	-	30	-	-	32.2	-	-	35
015Q-XXB	208	10.8	-	-	42.9	-	-	45	-	-	46.3	-	-	50

We Encourage Professionalism



CERTIFICATION APPLIES ONLY WHEN THE COMPLETE SYSTEM IS LISTED WITH ARI

Through Technician Certification by NATE

975A-0605 (Replaces 975A-0604)