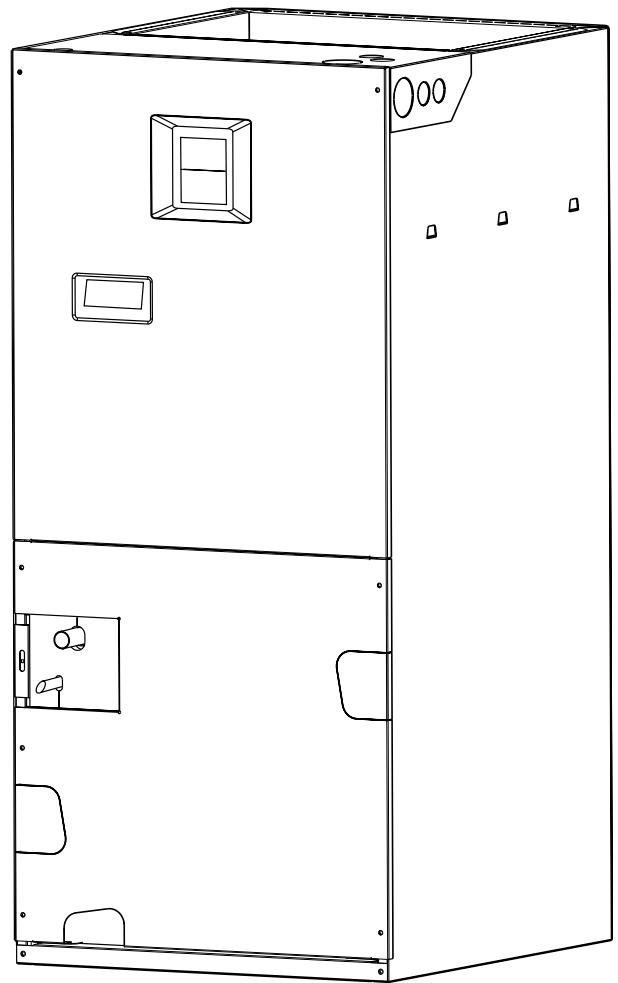


## **B4VM-X Series Air Handler with TXV 15+ SEER Residential System 24,000 - 60,000 Btuh (Heat Pump & Air Conditioner) R-410A Refrigerant**

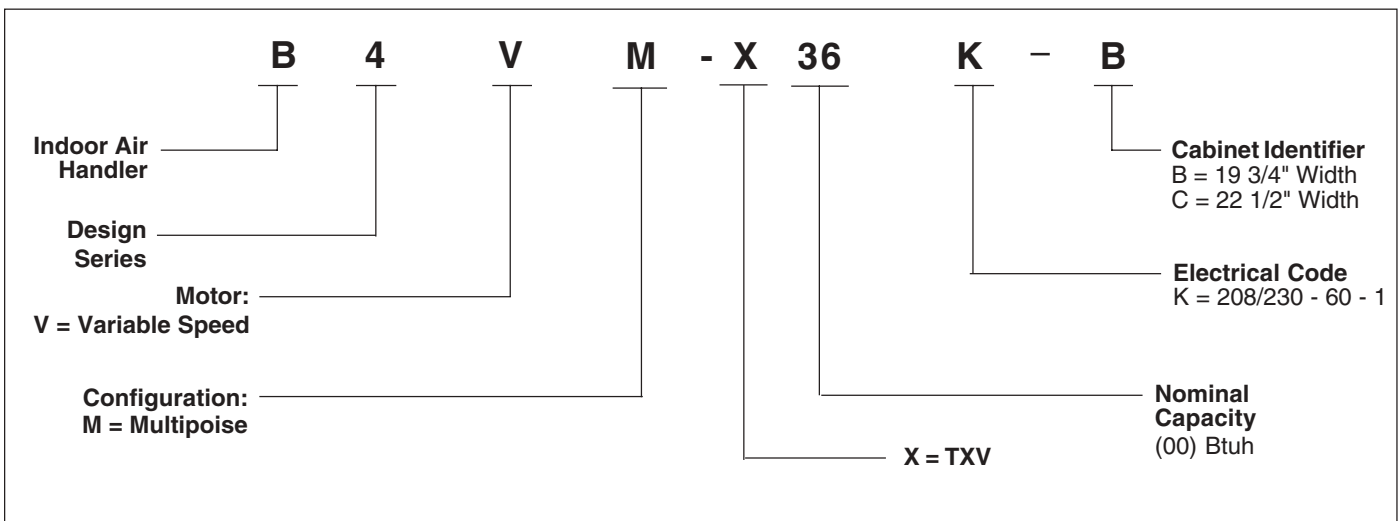
The B4VM Series of air handlers, when combined with our 2-stage heat pump or 2-stage air conditioner, offers a full line of quality, split system heating and cooling equipment.

### **FEATURES and BENEFITS**

- **Increased Efficiencies**-Air conditioning and heat pump efficiencies up to 16 SEER and 8.5 HSPF.
- **ECM Variable Speed Motor** - Programmed to provide 12 field-selectable cooling airflows and 4 heating airflows to match any application.
- **Quiet Blower Operation** - Extra quiet and smooth blower on and off cycles.
- **Constant airflow** - Motor automatically adjusts to different static loads.
- **Selectable delay profiles** - Increases efficiency and comfort.
- **Reduced air stratification** - This results in improved air quality by optimizing humidity removal and filtration capabilities.
- **Multi-poised** - Can be used in horizontal, upflow, down-flow and vertical applications.
- **Built in Filter Rack** - makes the air handler easy to service.
- **Plug-in Heater Kits** - Available in 5 kw through 20 kw (Not for use in 115 Volt units)
- **Breaker Accessibility** - Breaker accessible from the front of the unit when heater is applied.
- **Plastic Drain Pan** - Provides corrosion resistance.
- **Durable Cabinet** - Galvanized steel with a polyurethane finish. The finish will endure 950 hours of salt spray and resist corrosion 50% better than comparable units.
- **8 Year Limited Parts Warranty** - Proven to be a major benefit to the consumer.
- **2-Stage Cooling** - ECM variable speed motor is programmed to operate at 75% of selected CFM when the system is operating in low stage cooling.
- **Thermal Expansion Valve** - Factory installed externally equalized thermal expansion valve provides precise refrigerant control under varying load conditions.



## MODEL IDENTIFICATION CODE



## SPECIFICATIONS

Model B4VM-X	24-B	36-C	48-C	60-C
Refrigerant Flow Control	TXV	TXV	TXV	TXV
Maximum Available Auxiliary Heat (kw)	20	20	20	20
Nominal Blower Size (D x W)	11 x 8	11 x 10	11 x 10	11 x 10
Variable Speed Motor HP	1/2	3/4	3/4	3/4
Rated External Static Pressure (in. W.C.)	.30	.35	.35	.40
CFM*	720 - 1450	1075 - 2150	1075 - 2150	1075 - 2150
Filter Size	18 x 20 x 1	20 x 20 x 1	20 x 20 x 1	20 x 20 x 1
Approximate Shipping Weight (lbs.)	120	160	170	170

### NOTES:

- 1) See current ARI Directory for certified combinations and ratings.

\*Field selectable in 12 steps

## ACCESSORIES

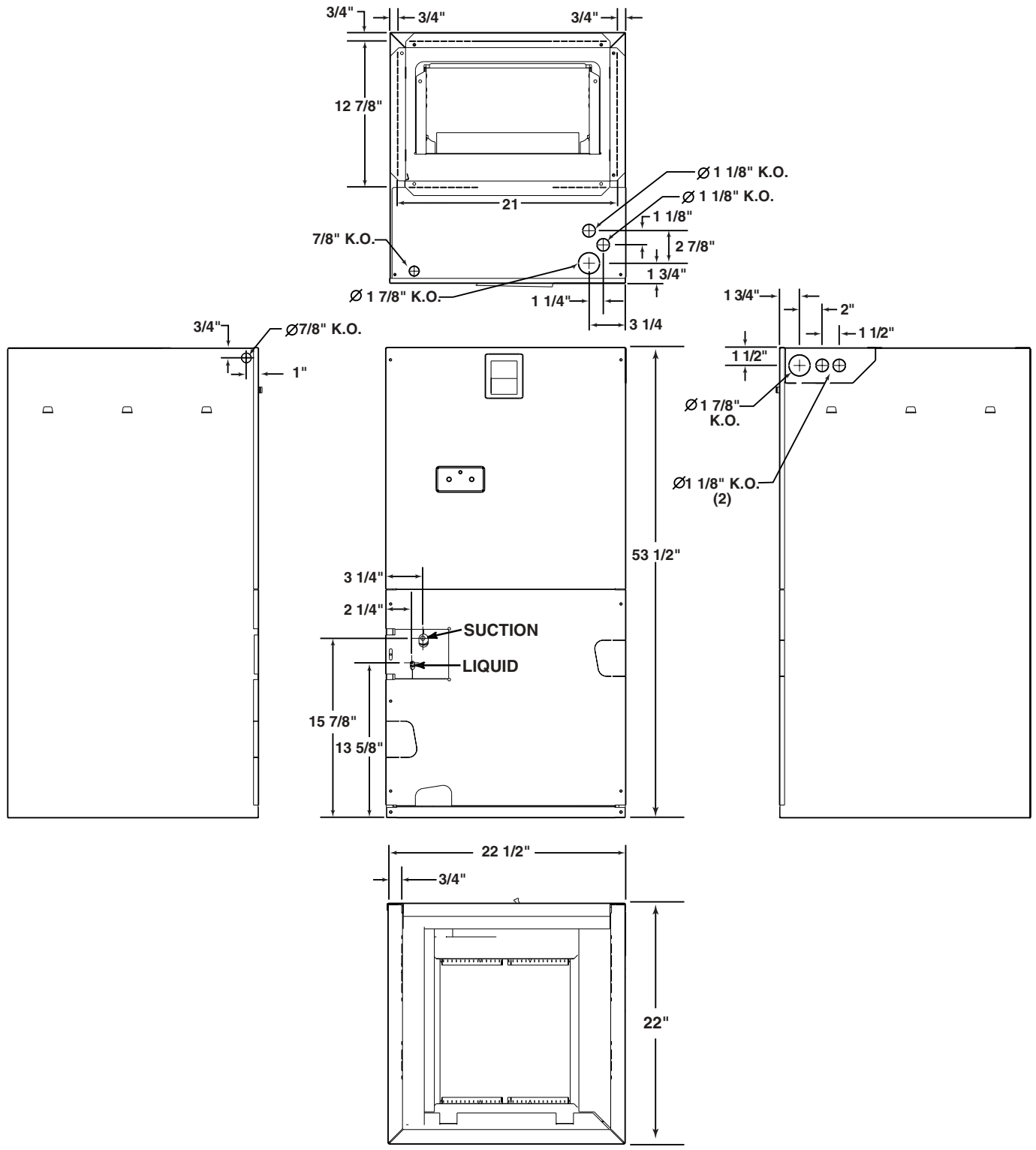
Accessory Kit Description	Order Number
Downflow Adaptor Kit	917344A
Single Circuit Adaptor Kit	913874
Humidistat	913769
Bonnet Temperature Control	913866

### 240v Single Phase Electric Heat Kits

KW	No. of Stages	Order Number	
		with Circuit Breaker(s)	w/o Circuit Breaker(s)
5	1	917367A	917366A
8	1	917370A	917368A
10	1	917374A	917372A
14	1	903927	N/A
15	1	903959	N/A
20	1	903960	N/A

# DIMENSIONS

Models B4VM-X	H	W	Refrigerant Connections		Filter Size	Supply Air Duct Dimensions
			Suction Dia.	Liquid Dia.		
24K-B	43 1/2	19 3/4	3/4	3/8	18 x 20 x 1	12 7/8 x 18 1/4
36K-C	53 1/2	22 1/2	7/8	3/8	20 x 20 x 1	12 7/8 x 21
48K-C	53 1/2	22 1/2	7/8	3/8	20 x 20 x 1	12 7/8 x 21
60K-C	53 1/2	22 1/2	7/8	3/8	20 x 20 x 1	12 7/8 x 21



# ELECTRICAL DATA

			Variable Speed Air Handler					
			Min. Circuit Ampacity			Max. Over-Current Protection		
			Circuit A	Circuit B	Single Circuit	Circuit A	Circuit B	Single Circuit
Model Number H4HK	Voltage	KW						
005H-XX-A	240	4.8	-	-	34.8	-	-	40
008H-XX-A	240	7.5	-	-	47.8	-	-	50
010H-XX-A	240	9.6	-	-	58.8	-	-	60
014H-XX-A	240	13.4	43.4	34.9	78.3	45	35	80
015H-XX-A	240	14.4	59.3	25.0	83.8	60	30	90
020H-XX-A	240	19.2	59.3	50.0	108.8	60	50	125
005H-XX-A	208	3.6	-	-	30.9	-	-	40
008H-XX-A	208	5.6	-	-	43.1	-	-	50
010H-XX-A	208	7.2	-	-	52.5	-	-	60
014H-XX-A	208	10.0	39.2	26.0	69.2	40	30	70
015H-XX-A	208	10.8	52.5	21.6	74.2	60	30	80
020H-XX-A	208	14.4	52.5	43.3	95.8	60	50	100

Basic Airflow Setting																		
B-Cabinet						C-Cabinet												
CFM	Switch Number				Nominal Capacity					CFM	Switch Number				Nominal Capacity			
	1	2	3	4	5	6	7	8	9		10	1	2	3	4	5	6	7
720	0	0	0	1	■	■	■	■	■	■	■	■	■	■	■	■	■	■
800	0	0	0	0	■	■	■	■	■	■	■	■	■	■	■	■	■	■
860	1	0	0	1	■	■	■	■	■	■	■	■	■	■	■	■	■	■
885	0	0	1	0	■	■	■	■	■	■	■	■	■	■	■	■	■	■
960	1	0	0	0	■	■	■	■	■	■	■	■	■	■	■	■	■	■
1060	1	0	1	0	■	■	■	■	■	■	■	■	■	■	■	■	■	■
1125	0	1	0	1	■	■	■	■	■	■	■	■	■	■	■	■	■	■
1185	1	1	0	1	■	■	■	■	■	■	■	■	■	■	■	■	■	■
1250	0	1	0	0	■	■	■	■	■	■	■	■	■	■	■	■	■	■
1315	1	1	0	0	■	■	■	■	■	■	■	■	■	■	■	■	■	■
1375	0	1	1	0	■	■	■	■	■	■	■	■	■	■	■	■	■	■
1450	1	1	1	0	■	■	■	■	■	■	■	■	■	■	■	■	■	■
1075	0	0	0	1	■	■	■	■	■	■	■	■	■	■	■	■	■	■
1140	1	0	0	1	■	■	■	■	■	■	■	■	■	■	■	■	■	■
1225	0	0	0	0	■	■	■	■	■	■	■	■	■	■	■	■	■	■
1300	1	0	0	0	■	■	■	■	■	■	■	■	■	■	■	■	■	■
1380	0	0	1	0	■	■	■	■	■	■	■	■	■	■	■	■	■	■
1465	1	0	1	0	■	■	■	■	■	■	■	■	■	■	■	■	■	■
1555	0	1	0	1	■	■	■	■	■	■	■	■	■	■	■	■	■	■
1665	1	1	0	1	■	■	■	■	■	■	■	■	■	■	■	■	■	■
1775	0	1	0	0	■	■	■	■	■	■	■	■	■	■	■	■	■	■
1900	1	1	0	0	■	■	■	■	■	■	■	■	■	■	■	■	■	■
2000	0	1	1	0	■	■	■	■	■	■	■	■	■	■	■	■	■	■
2150	1	1	1	0	■	■	■	■	■	■	■	■	■	■	■	■	■	■

Note: 1=ON, 0=OFF



We Encourage Professionalism



Through Technician Certification by NATE



CERTIFICATION APPLIES ONLY WHEN THE COMPLETE SYSTEM IS LISTED WITH ARI

515B-0404 (Replaces 515B-1003)