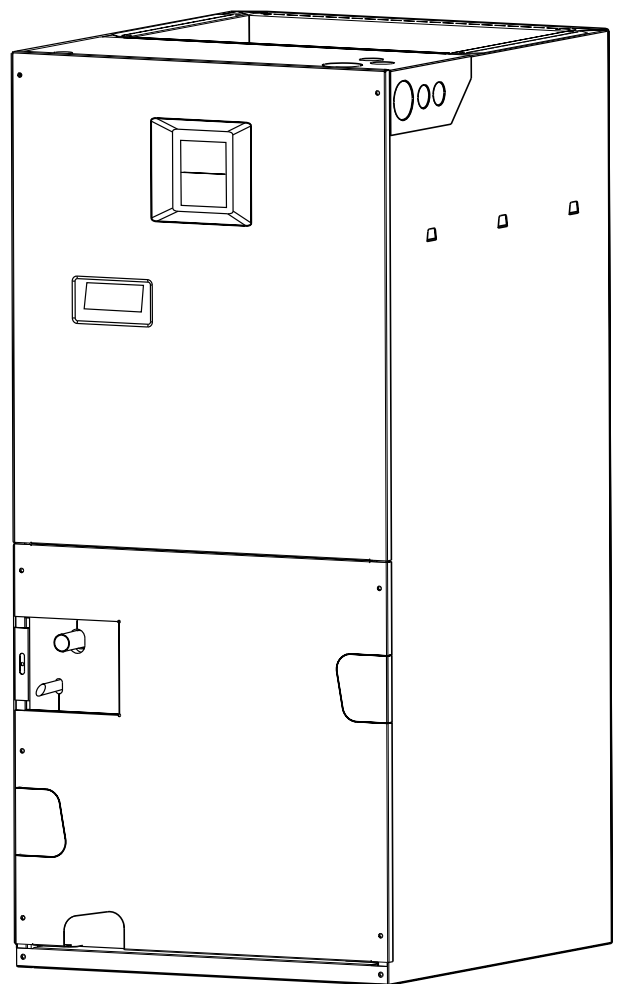


B4VM-X Series Air Handler with TXV 15+ SEER Residential System 24,000 - 60,000 Btuh (Heat Pump & Air Conditioner) R-410A Refrigerant

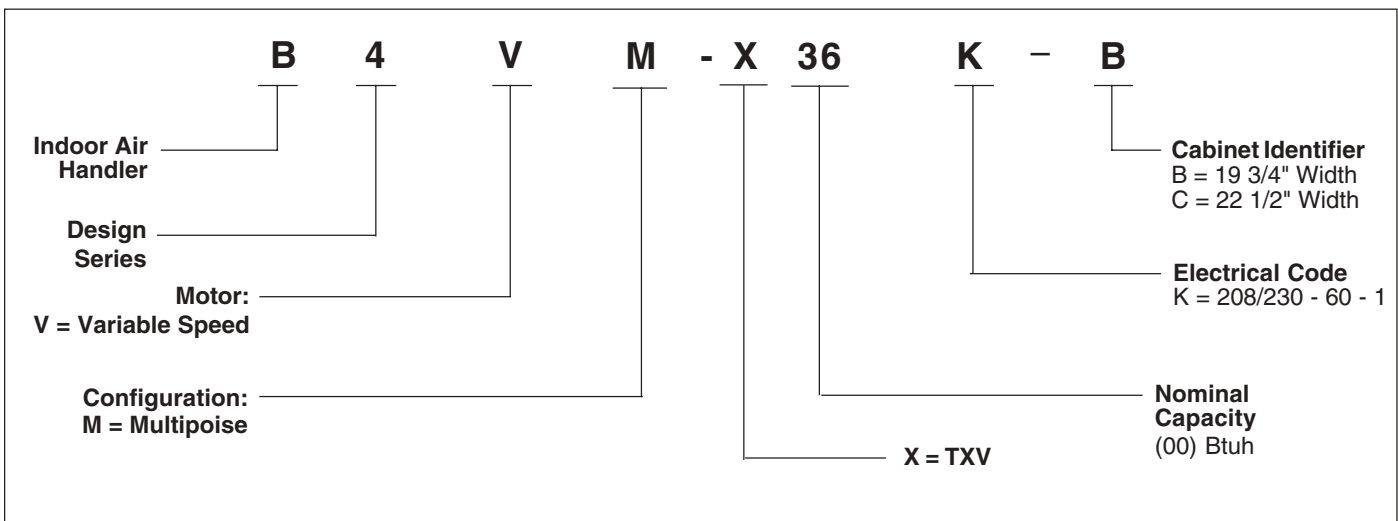
The B4VM Series of air handlers, when combined with our 2-stage heat pump or 2-stage air conditioner, offers a full line of quality, split system heating and cooling equipment.

FEATURES and BENEFITS

- **Increased Efficiencies**-Air conditioning and heat pump efficiencies up to 16 SEER and 8.5 HSPF.
- **ECM Variable Speed Motor** - Programmed to provide 12 field-selectable cooling airflows and 4 heating airflows to match any application.
- **Quiet Blower Operation** - Extra quiet and smooth blower on and off cycles.
- **Constant airflow** - Motor automatically adjusts to different static loads.
- **Selectable delay profiles** - Increases efficiency and comfort.
- **Reduced air stratification** - This results in improved air quality by optimizing humidity removal and filtration capabilities.
- **Multi-poised** - Can be used in horizontal, upflow, down-flow and vertical applications.
- **Built in Filter Rack** - makes the air handler easy to service.
- **Plug-in Heater Kits** - Available in 5 kw through 20 kw (Not for use in 115 Volt units)
- **Breaker Accessibility** - Breaker accessible from the front of the unit when heater is applied.
- **Plastic Drain Pan** - Provides corrosion resistance.
- **Durable Cabinet** - Galvanized steel with a polyurethane finish. The finish will endure 950 hours of salt spray and resist corrosion 50% better than comparable units.
- **8 Year Limited Parts Warranty** - Proven to be a major benefit to the consumer.
- **2-Stage Cooling** - ECM variable speed motor is programmed to operate at 75% of selected CFM when the system is operating in low stage cooling.
- **Thermal Expansion Valve** - Factory installed externally equalized thermal expansion valve provides precise refrigerant control under varying load conditions.



MODEL IDENTIFICATION CODE



SPECIFICATIONS

Model B4VM-X	24-B	36-C	48-C	60-C
Refrigerant Flow Control	TXV	TXV	TXV	TXV
Maximum Available Auxiliary Heat (kw)	20	20	20	20
Nominal Blower Size (D x W)	11 x 8	11 x 10	11 x 10	11 x 10
Variable Speed Motor HP	1/2	3/4	3/4	3/4
Rated External Static Pressure (in. W.C.)	.30	.35	.35	.40
CFM*	720 - 1450	1075 - 2150	1075 - 2150	1075 - 2150
Filter Size	18 x 20 x 1	20 x 20 x 1	20 x 20 x 1	20 x 20 x 1
Approximate Shipping Weight (lbs.)	120	160	170	170

NOTES:

- See current ARI Directory for certified combinations and ratings.

*Field selectable in 12 steps

ACCESSORIES

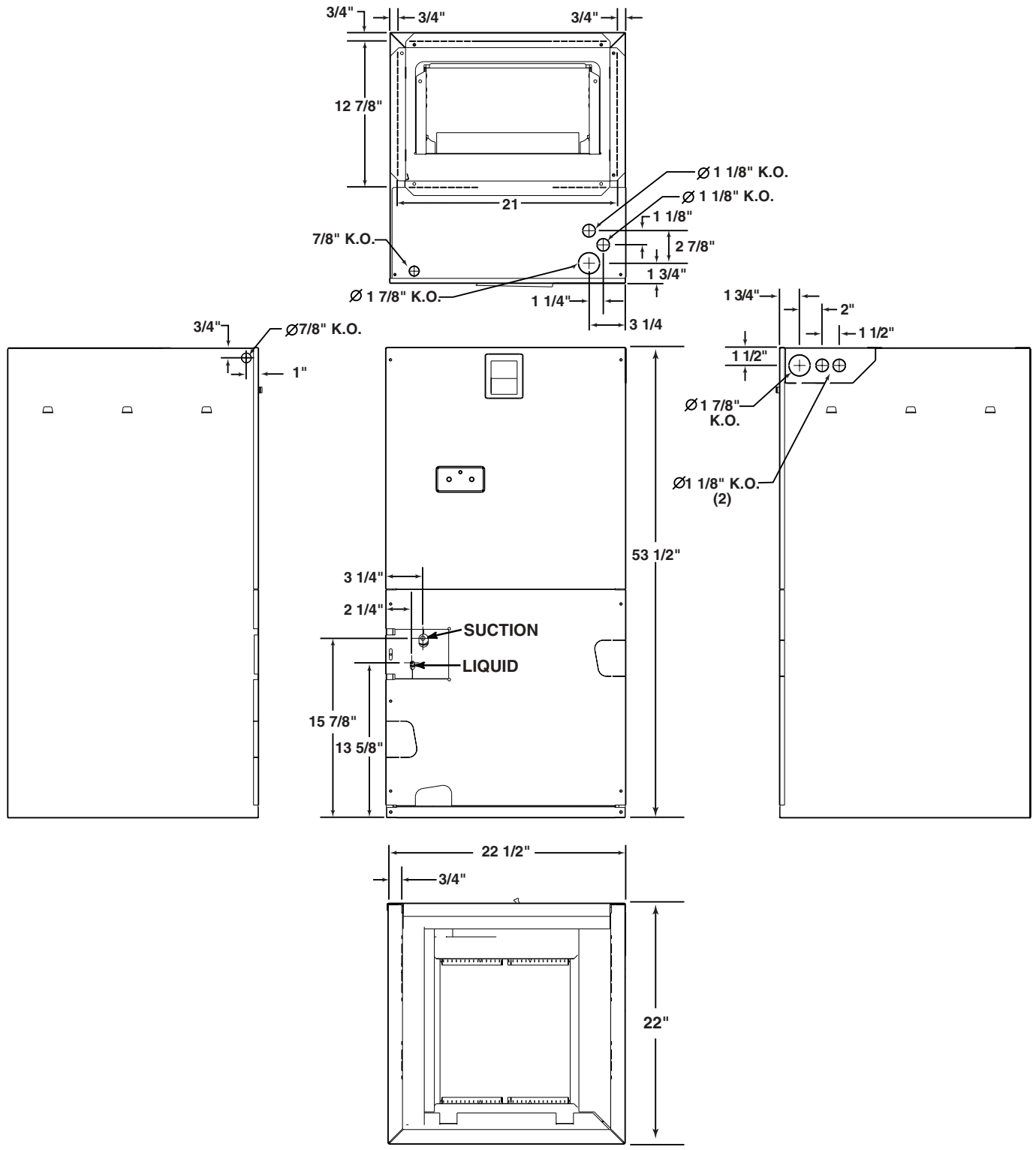
Accessory Kit Description	Order Number
Downflow Adaptor Kit	917344A
Single Circuit Adaptor Kit	913874
Humidistat	913769
Bonnet Temperature Control	913866

240v Single Phase Electric Heat Kits

KW	No. of Stages	Order Number	
		with Circuit Breaker(s)	w/o Circuit Breaker(s)
5	1	917367A	917366A
8	1	917370A	917368A
10	1	917374A	917372A
14	1	903927	N/A
15	1	903959	N/A
20	1	903960	N/A

DIMENSIONS

Models B4VM-X	H	W	Refrigerant Connections		Filter Size	Supply Air Duct Dimensions
			Suction Dia.	Liquid Dia.		
24K-B	43 1/2	19 3/4	3/4	3/8	18 x 20 x 1	12 7/8 x 18 1/4
36K-C	53 1/2	22 1/2	7/8	3/8	20 x 20 x 1	12 7/8 x 21
48K-C	53 1/2	22 1/2	7/8	3/8	20 x 20 x 1	12 7/8 x 21
60K-C	53 1/2	22 1/2	7/8	3/8	20 x 20 x 1	12 7/8 x 21



ELECTRICAL DATA

			Variable Speed Air Handler					
			Min. Circuit Ampacity			Max. Over-Current Protection		
			Circuit A	Circuit B	Single Circuit	Circuit A	Circuit B	Single Circuit
Model Number H4HK	Voltage	KW						
005H-XX-A	240	4.8	-	-	34.8	-	-	40
008H-XX-A	240	7.5	-	-	47.8	-	-	50
010H-XX-A	240	9.6	-	-	58.8	-	-	60
014H-XX-A	240	13.4	43.4	34.9	78.3	45	35	80
015H-XX-A	240	14.4	59.3	25.0	83.8	60	30	90
020H-XX-A	240	19.2	59.3	50.0	108.8	60	50	125
005H-XX-A	208	3.6	-	-	30.9	-	-	40
008H-XX-A	208	5.6	-	-	43.1	-	-	50
010H-XX-A	208	7.2	-	-	52.5	-	-	60
014H-XX-A	208	10.0	39.2	26.0	69.2	40	30	70
015H-XX-A	208	10.8	52.5	21.6	74.2	60	30	80
020H-XX-A	208	14.4	52.5	43.3	95.8	60	50	100

Basic Airflow Setting																						
B-Cabinet						C-Cabinet																
CFM	Switch Number				Nominal Capacity					CFM	Switch Number				Nominal Capacity							
	1	2	3	4	S1	S2	S3	S4	S5		S6	S7	1	2	3	4	S1	S2	S3	S4	S5	
720	0	0	0	1	■	■	■	■	■	■	■	0	0	0	1	■	■	■	■	■	■	■
800	0	0	0	0	■	■	■	■	■	■	■	0	0	0	0	■	■	■	■	■	■	■
860	1	0	0	1	■	■	■	■	■	■	■	0	0	0	0	■	■	■	■	■	■	■
885	0	0	1	0	■	■	■	■	■	■	■	0	0	0	0	■	■	■	■	■	■	■
960	1	0	0	0	■	■	■	■	■	■	■	0	0	0	0	■	■	■	■	■	■	■
1060	1	0	1	0	■	■	■	■	■	■	■	0	0	0	0	■	■	■	■	■	■	■
1125	0	1	0	1	■	■	■	■	■	■	■	0	0	0	0	■	■	■	■	■	■	■
1185	1	1	0	1	■	■	■	■	■	■	■	0	0	0	0	■	■	■	■	■	■	■
1250	0	1	0	0	■	■	■	■	■	■	■	0	0	0	0	■	■	■	■	■	■	■
1315	1	1	0	0	■	■	■	■	■	■	■	0	0	0	0	■	■	■	■	■	■	■
1375	0	1	1	0	■	■	■	■	■	■	■	0	0	0	0	■	■	■	■	■	■	■
1450	1	1	1	0	■	■	■	■	■	■	■	0	0	0	0	■	■	■	■	■	■	■
1075	0	0	0	1	■	■	■	■	■	■	■	0	0	0	1	■	■	■	■	■	■	■
1140	1	0	0	1	■	■	■	■	■	■	■	0	0	0	1	■	■	■	■	■	■	■
1225	0	0	0	0	■	■	■	■	■	■	■	0	0	0	0	■	■	■	■	■	■	■
1300	1	0	0	0	■	■	■	■	■	■	■	0	0	0	0	■	■	■	■	■	■	■
1380	0	0	1	0	■	■	■	■	■	■	■	0	0	1	0	■	■	■	■	■	■	■
1465	1	0	1	0	■	■	■	■	■	■	■	0	0	1	0	■	■	■	■	■	■	■
1555	0	1	0	1	■	■	■	■	■	■	■	0	0	1	1	■	■	■	■	■	■	■
1665	1	1	0	1	■	■	■	■	■	■	■	0	0	1	1	■	■	■	■	■	■	■
1775	0	1	0	0	■	■	■	■	■	■	■	0	0	0	0	■	■	■	■	■	■	■
1900	1	1	0	0	■	■	■	■	■	■	■	0	0	0	0	■	■	■	■	■	■	■
2000	0	1	1	0	■	■	■	■	■	■	■	0	0	1	0	■	■	■	■	■	■	■
2150	1	1	1	0	■	■	■	■	■	■	■	0	0	1	0	■	■	■	■	■	■	■

Note: 1=ON, 0=OFF



We Encourage Professionalism



Through Technician Certification by NATE



CERTIFICATION APPLIES ONLY WHEN THE COMPLETE SYSTEM IS LISTED WITH ARI

514B-0404 (Replaces 514B-1003)