



## **KG6TE Series**

### **High Efficiency / Direct Vent or Non Direct Vent 2-Stage Condensing Gas Furnace with Variable Speed Blower**

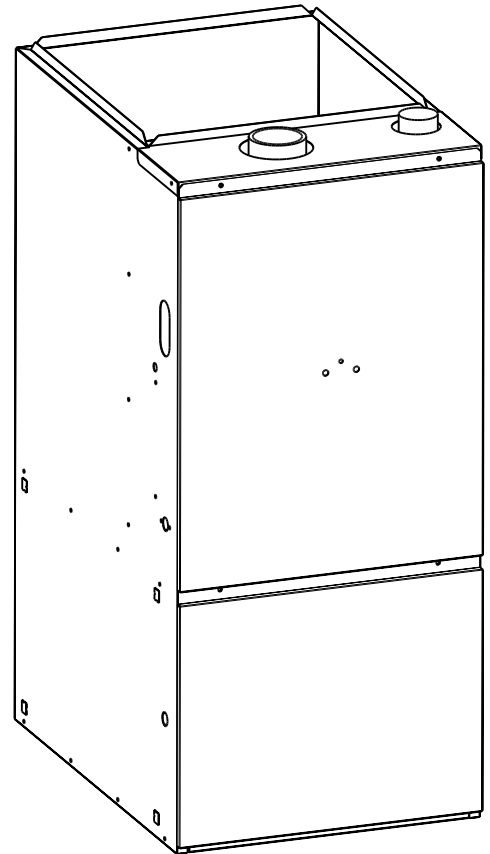
#### **95.1 Upflow/Horizontal**

The high efficiency 2-Stage gas furnace may be installed free standing in a utility room, basement, or enclosed in an alcove or closet. The upflow model converts easily to horizontal application. The extended flush jacket provides a pleasing “appliance appearance.” Design certified by CSA International (Canadian Standards Association).

#### **Features and Benefits**

- **100% fired and tested** – All units and each component (both mechanical and electrical) are tested on the manufacturing line.
- **Best packaging in the industry** – Unique design assures product will arrive to the homeowner dent free.
- **Clean, quiet, and efficient operation** – Due to the unique design of in-shot burners, location of inducer, use of insulation, and operating at low fire using less fuel than single capacity furnaces.
- **Fixed 30 second blower delay** at burner start-up assures a warm duct temperature at furnace start-up.
- **Fixed 30-second inducer post purge** increases life of heat exchanger.
- **Dependable, hot surface ignitor** – Innovative application of an appliance type ignitor with a 20-year history of reliability, assures no call-backs because of handling.
- **Color coded wire harness** – Designed to fit the components, all with quick-connect fittings for ease of service and replacement.
- **Reliable heat exchanger** – Aluminized primary and stainless steel secondary heat exchanger assures long life.
- **40-second fixed cooling cycle blower-off delay (TDR)** increases cooling performance when matched with a NORDYNE coil.
- **Approved for direct vent and non direct vent furnace, category IV venting system** – May be vertically or horizontally vented using either a one-pipe or two-pipe system for maximum flexibility in installation.
- **Variable speed blower** included to maximize air conditioner and heat pump efficiencies. On selected units, SEER ratings up to 16 and HSPF ratings up to 8.5 are ARI listed.
- **LP convertible** – Simple burner orifice and regulator spring change for ease of convertibility.
- **Factory installed drain system** – for reliable performance.
- **Diagnostic light flashes identify limit failure, pressure switch failure and improper ground and polarization** – for easy troubleshooting.
- **Incorporates integrated control board** with connections for electronic air cleaner, humidifier and twinning.
- **Two piece door design** enhances furnace appearance and uses screw fasteners for great fit and accessibility.
- **3 amp fuse** protection against low voltage shorts; protects transformer and control board.
- **Low voltage terminal board** for easy field wiring.
- **Five year limited parts warranty**
- **Lifetime limited heat exchanger warranty**

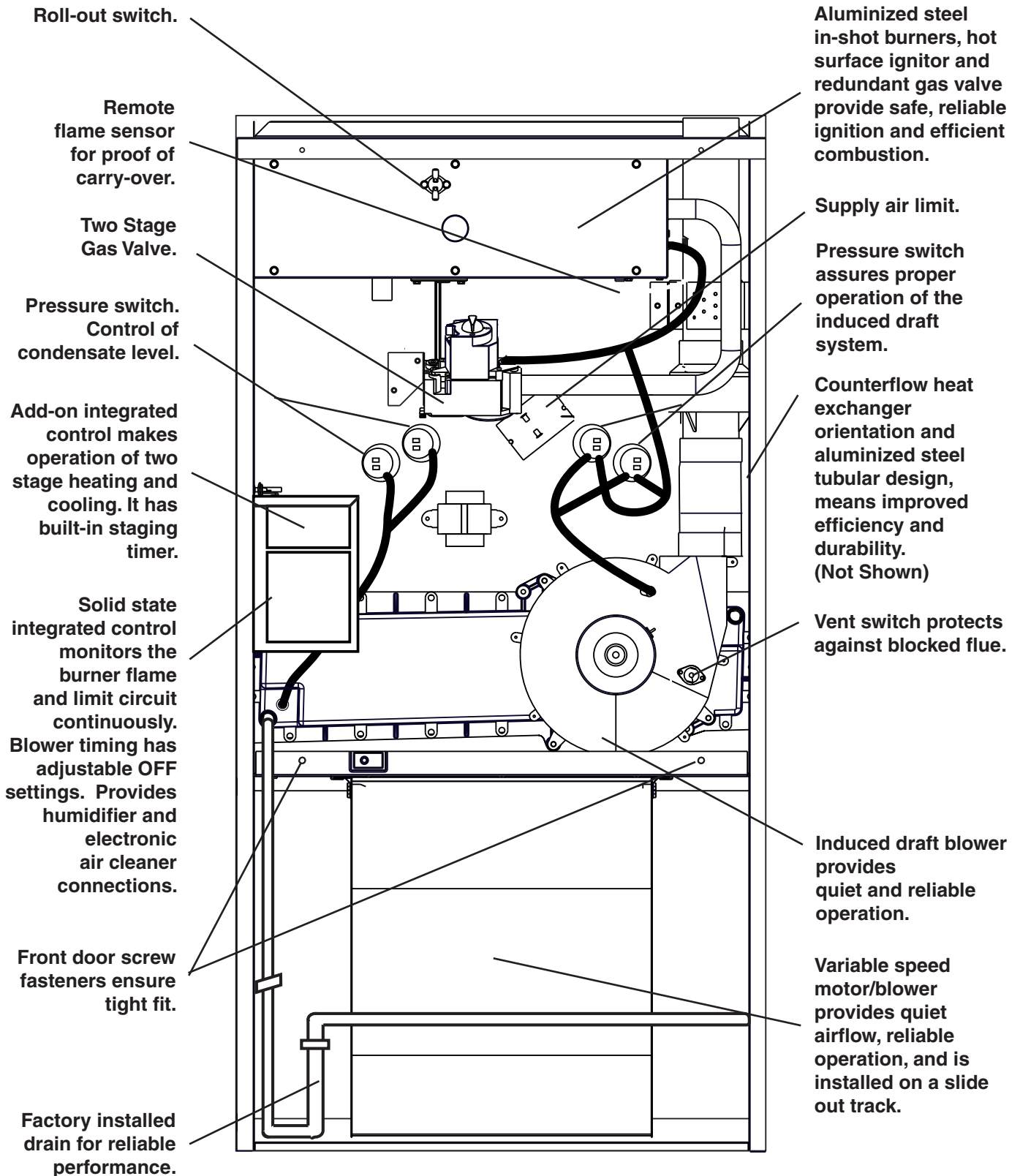
**Upflow/  
Horizontal  
Gas  
Furnace  
Shown**





# FEATURES

## High Efficiency Upflow 95.1 Gas Furnace



## STANDARD EQUIPMENT

Direct vent; draft inducer; pressure switch; redundant main gas control; hot-surface ignition; timed ON/OFF blower controls (TDR); 40VA transformer for air conditioner application; limit controls; direct drive motor; all models can be converted to use L.P. (propane) gas. Factory approved kits *only* must be used and are available as an optional accessory from your NORDYNE distributor.

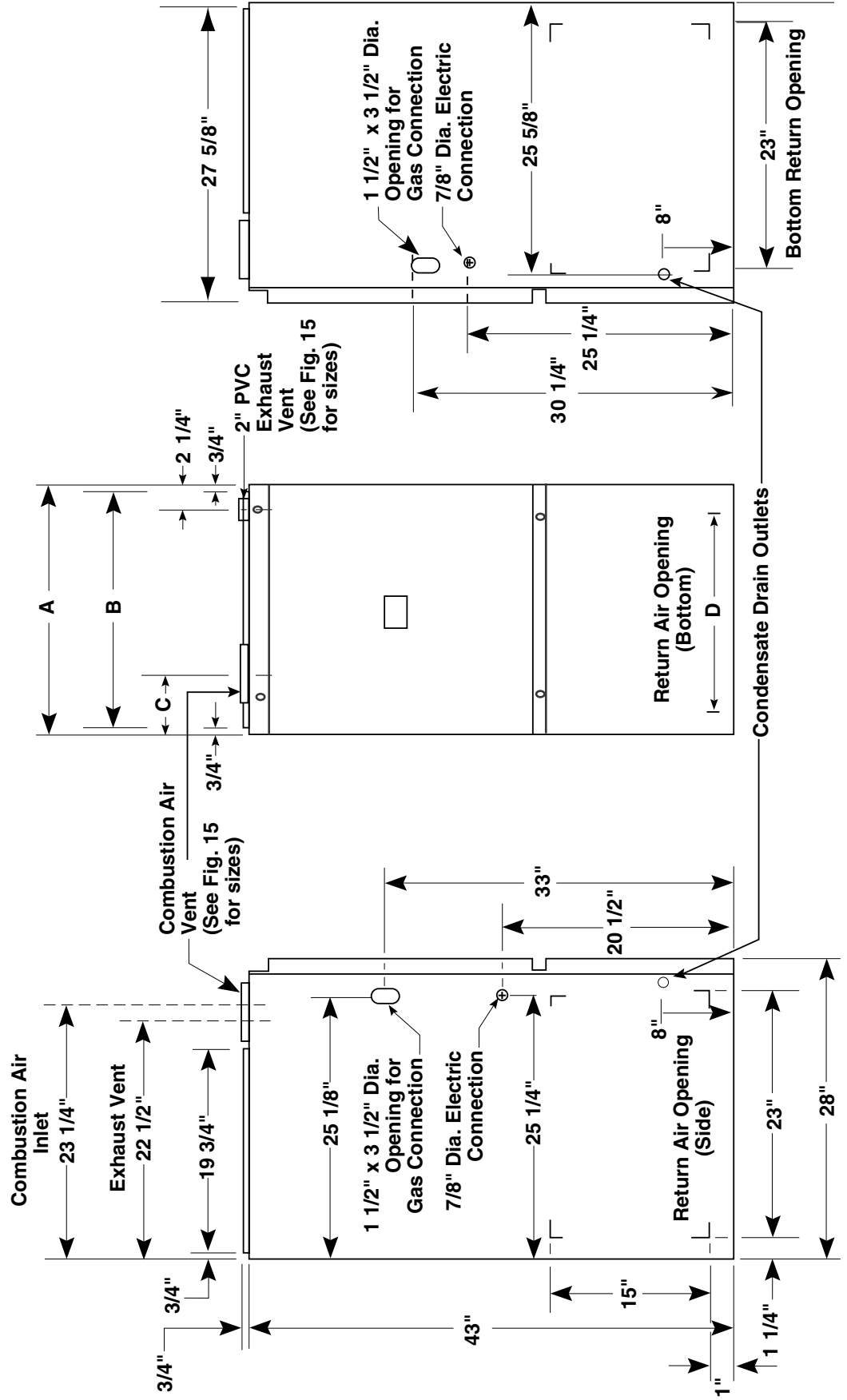
## SPECIFICATIONS

MODEL NUMBER *TE	080(C,N)-VB	100(C,N)-VB
High Fire Rated Input(Btu/h) (a)	80,000	100,000
High Fire Heating Capacity(Btu/h)	76,000	95,000
Low Fire Rated Input(Btu/h) (a)	56,000	70,000
Low Fire Heating Capacity(Btu/h)	53,000	67,000
<b>AFUE</b>	<b>95+</b>	<b>95+</b>
Maximum Heating Ext. St. Press.(in WC)	0.5	0.5
Blower Wheel D x W	11 x 10	11 x 10
Motor H.P. -Type	3/4 - Variable	3/4 - Variable
Motor FLA	9.6	9.6
High Fire Temperature Rise Range(F)	30-60	35-65
Low Fire Temperature Rise Range(F)	30-60	35-65

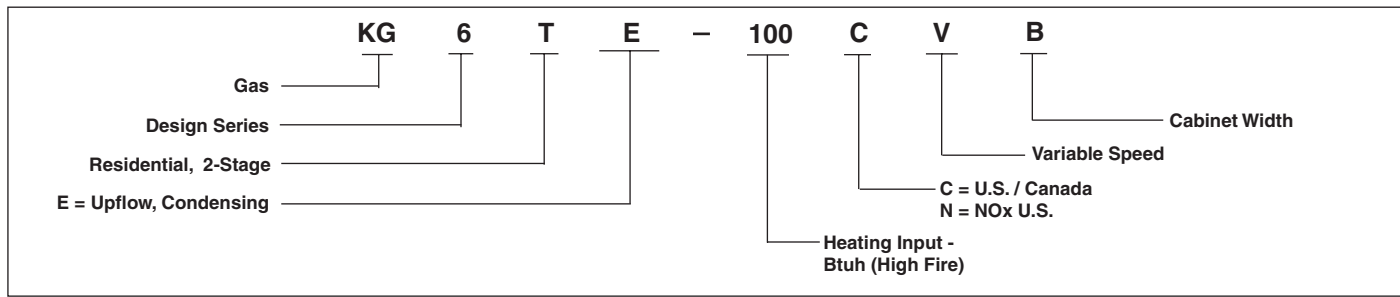
# DIMENSIONS

## Upflow/Horizontal Furnace

Model Number KG6TE-	High Fire Furnace Btuh	Low Fire Furnace Input	Dimensions (inches)				Shipping Weight (lbs)
			A	B	C	D	
080	80,000	56,000	19 3/4	18 1/4	7 7/8	17 1/4	195
100	100,000	70,000	19 3/4	18 1/4	7 7/8	17 1/4	200



## MODEL IDENTIFICATION CODE



## VENTING

All models are approved for vertical non direct (1 pipe) and direct (2 pipe) venting applications. See Vent Table below for specified sizes and allowable lengths.

## VENT TABLE

APPLICATION	SINGLE PIPE LENGTH (ft.) with 1 long radius elbow**		DIRECT VENT, DUAL PIPE LENGTH (ft.) with 1 long radius elbow on each pipe**					
	Outlet	Outlet	Inlet/Outlet		Inlet/Outlet		Inlet/Outlet	
PVC, CPVC or ABS SCH. 40 Pipe Size	2"	3"	2"	2"	3"	2"	3"	3"
Models *TE 080	45	200	30	30	40	40	110	110
Models *TE 100	40	200	25	25	40	40	110	110

### \*\* NOTES

- 3.5' for each additional 3" **long** radius elbow, and 7' for each additional 3" **short** radius elbow.
- Two 45 degree elbows are equivalent to one 90 degree elbow.
- Do not include termination elbows in calculation of vent length.
- This table is applicable for elevations from sea level to 2000 ft. For higher elevations decrease vent pipe lengths by 8% per 1000 ft. of altitude.
- Only the above pipe materials are approved for use with these condensing furnaces.

## ACCESSORIES

Kit	Order Number
U.S. LP Conversion Kit (0 to 10,000 ft.)	904404
Canadian LP Gas Conversion Kit (0 to 4,500 ft.)	904405
Fossil Fuel Kit	914762
Side Return Filter Kit	541036
Bottom Return	B Cabinet 903089
Horizontal Installation	C Cabinet 903090
Internal Side Return Filter Wire	903152
Horizontal Installation Kit	903568
Add-on control Replacement Kit	904580
High Altitude Pressure Switch Kit (5,000 ft. to 10,000 ft. above sea level)	903852

## VENT KITS

Kit Description	Order Number
2" Concentric Vent Kit	904177
3" Concentric Vent Kit	904176
Neutralizer Kit (all models)	902377
Side Wall Vent Kit	904347

## ELECTRICAL DATA

Furnace Input (Btuh)	Cabinet Width (in.)	Nominal Electrical Supply	Maximum Operating Voltage	Minimum Operating Voltage	Maximum Furnace Amperes	Minimum Wire Gauge	Maximum Fuse or Circuit Breaker Amps*
80,000	19.75	115-60-1	127	103	12	14	15
100,000	19.75	115-60-1	127	103	12	14	15

\* Time-delay fuses or HACR-type circuit breakers are required.

Thermostat Wire Gauge	Recommended Thermostat Wire Length	
	2-wire (heating)	4 or 5-wire (cooling)
24	55 ft.	25 ft.
22	90 ft.	45 ft.
20	140 ft.	70 ft.
18	225 ft.	110 ft.

## CAPACITIES – Furnace Airflow Data

CFM	SWITCH NUMBER							Nominal A/C and HP Capacity		
	LOW	HIGH	1	2	3	4	5		6	7
500	720	0	0	0	1					
550	800	0	0	0	0					
610	880	0	0	1	0					2 TON
650	945	1	0	0	1					2.5 TON
720	1050	1	0	0	0					3 TON
800	1155	1	0	1	0					3.5 TON
900	1305	0	1	0	1					4 TON
1000	1450	0	1	0	0					5 TON
1060	1530	1	1	0	1					4 TON
1100	1595	0	1	1	0					5 TON
1170	1700	1	1	0	0					5 TON
1290	1870	1	1	1	0					5 TON

Note: 0 - Off 1 = On

\*TE 080/100/120 (3/4 HP)  
Cooling/Heat Pump Airflow Settings

Nominal Airflow (CFM) and Temperature Rises (degree F)										
Switches			*TE-080(CN)-VB Models				*TE-100 (CN)-VB Models			
			Low Fire Input 56,000		High Fire Input 80,000		Low Fire Input 70,000		High Fire Input 100,000	
5	6	7								
0	0	#	660	72	1090	63	660	90	1090	80
1	0	#	750	64	1240	57	750	80	1240	70
0	1	#	1220	40	1680	42	1220	49	1680	52

# Switch not used - Can be 0 or 1.

### Notes:

1. Recommended blower speed settings are highlighted in bold.
2. Airflow rates of 1800 CFM or more require two return air connections. Data is for operation with filter(s).
3. Temperature rises in the table are approximate. Actual temperature rises may vary.
4. Temperature rises that are shaded grey are for reference only. These conditions are not recommended.
5. For single stage cooling, the indoor blower will operate at the CFM listed in the "High" column.



365C-0806

O'Fallon, MO

**NORDYNE**

Before purchasing this appliance, read important energy cost and efficiency information available from your retailer. Specifications and illustrations subject to change without notice and without incurring obligations. Printed in U.S.A. (08/06)