

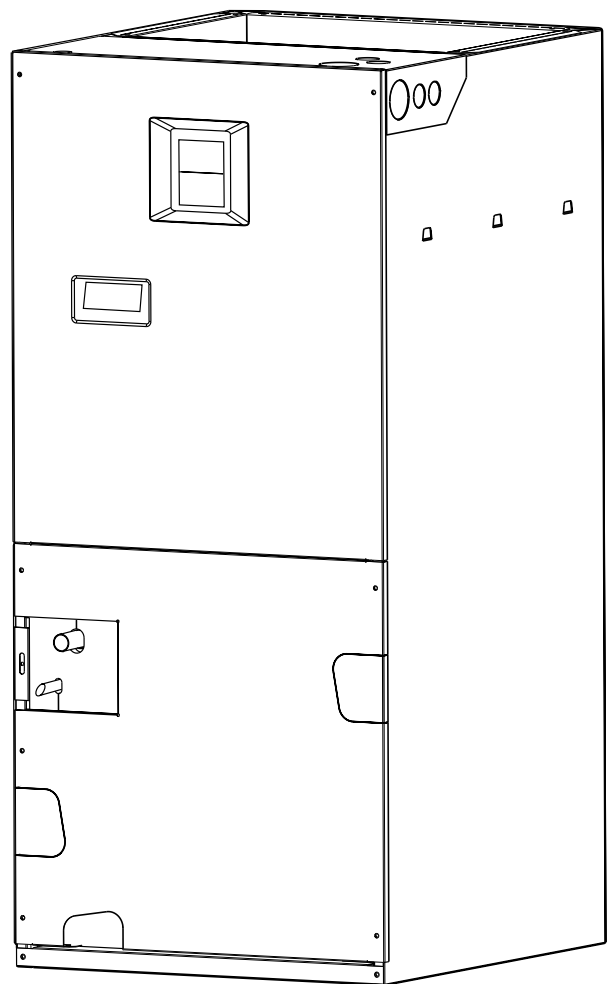
## **B3B(M,V) Series Air Handler**

### **10 and 12 SEER Residential System 18,000 - 60,000 Btuh (Heat Pump & Air Conditioner)**

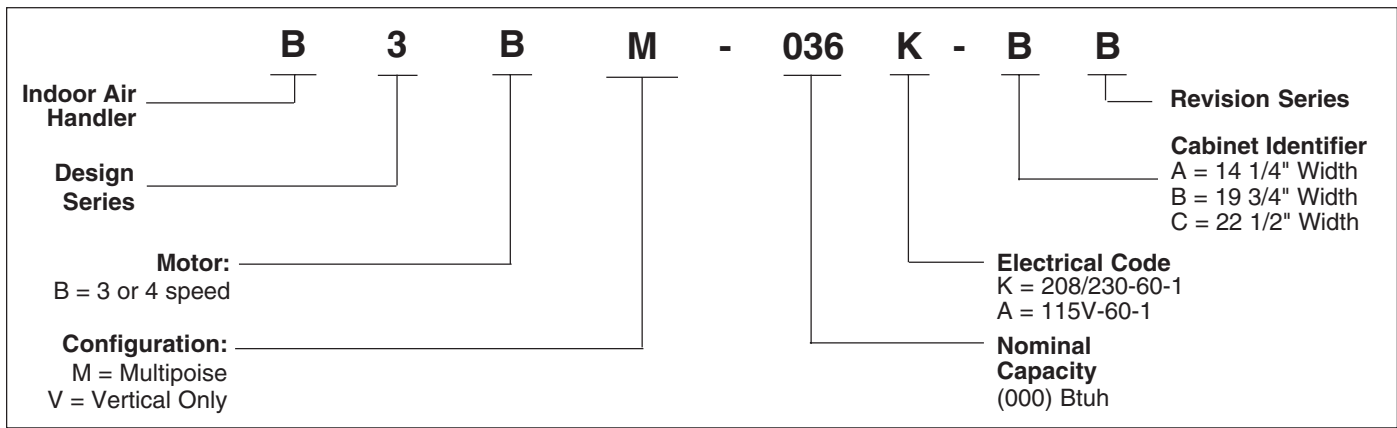
The B3B(M,V) Series of air handlers, when combined with our heat pump or air conditioner, offers a full line of quality, split system heating and cooling equipment.

#### **FEATURES and BENEFITS**

- **Durable, Attractive Cabinet** – Designed using galvanized steel with a polyurethane finish. The 950 hour salt spray finish is 1.5 mil thick and resists corrosion 50% better than comparable units. The plastic drain pan is corrosion resistant.
- **Multi-poised** – Can be used in horizontal, upflow, downflow and vertical applications. (B3BM Only)
- **Multi-speed** – Gives flexibility of installation.
- **Ease-of-Service** – Plug-in wire connections and built-in filter rack makes the air handler easy to service.
- **Plug-in Heater Kits** – Available in 5kw - 20 kw (Not for use in 115 Volt units)
- **Breaker Accessibility** – Breaker accessible from front of unit when heater is applied.
- **No Fasteners on sides or back** – Smooth surfaces for installations.
- **8 Year Limited All Parts Warranty** – The best in the industry and has proven to be a major benefit to the consumer.
- **Circuit Board** - Incorporating Blower Delay Relay and Low Voltage Terminal Strip.



## MODEL IDENTIFICATION CODE



## SPECIFICATIONS

Model Number B3B(M,V)-	024K-A	030K-A	030K-B	036K-B	042K-B	048K-B	060K-C	062K-C	066K-C
Nominal Cooling Capacity - Btuh (1)	24,000	30,000	30,000	36,000	42,000	48,000	60,000	60,000	60,000
Refrigerant Flow Control (2)	.060 (.051)*	.063 (.067)*	.063	.067	.075	.080	.093	.085	.103
Maximum Available (3) Auxiliary Heat (kw)	10	14	20	20	20	20	20	20	20
Nominal Blower Size (D x W)	10 x 6	10 x 6	10 x 8	10 x 8	10 x 8	10 x 8	10 x 10	10 x 10	10 x 10
(H.P. - Speed - Type)	1/5-3-PSC	1/3-3-PSC	1/3-3-PSC	1/3-3-PSC	1/3-3-PSC	1/2-3-PSC	3/4-3-PSC	3/4-3-PSC	3/4-3-PSC
Rated External Static Pressure (in. W.C.)	.30	.35	.35	.35	.35	.40	.40	.40	.40
CFM @ Rated ESP	880	1150	1250	1250	1300	1450	1880	1920	1920
Filter Size (4)	12 x 20 x 1	12 x 20 x 1	18 x 20 x 1	18 x 20 x 1	18 x 20 x 1	18 x 20 x 1	20 x 20 x 1	20 x 20 x 1	20 x 20 x 1
Approximate Shipping Weight (lbs.)	75	85	105	105	110	140	145	150	155

(1) See current ARI Directory for certified combinations and ratings.

(2) Units are 10 SEER air conditioner ready as shipped.

(3) Heater kits not applicable to 115 Volt units.

(4) Filter is field supplied.

\* Additional orifice shipped with unit

## ACCESSORIES

Accessory Kit Description	Cabinet Size			Order Number
	A	B	C	
Downflow Adaptor Kit	X			917342
		X		917343A
			X	917344A
Single Circuit Adaptor Kit		X	X	913874
B3BV Horizontal Drain Pan Conversion Kit	X	X	X	903749
Variable Speed Kit		X		903764B
			X	903765B

### \*\*240V Single Phase Electric Heat Kits

KW	No. of Stages	Approved for Cabinet	Order Number	
			with Circuit Breaker(s)	w/o Circuit Breaker(s)
5	1	A, B, C	917367B	917366B
8	1	A, B, C	917370B	917368B
10	1	A, B, C	917374B	917372B
12	1	A, B, C	904198B	N/A
15	1	B, C	903959B	N/A
20	1	B, C	903960B	N/A

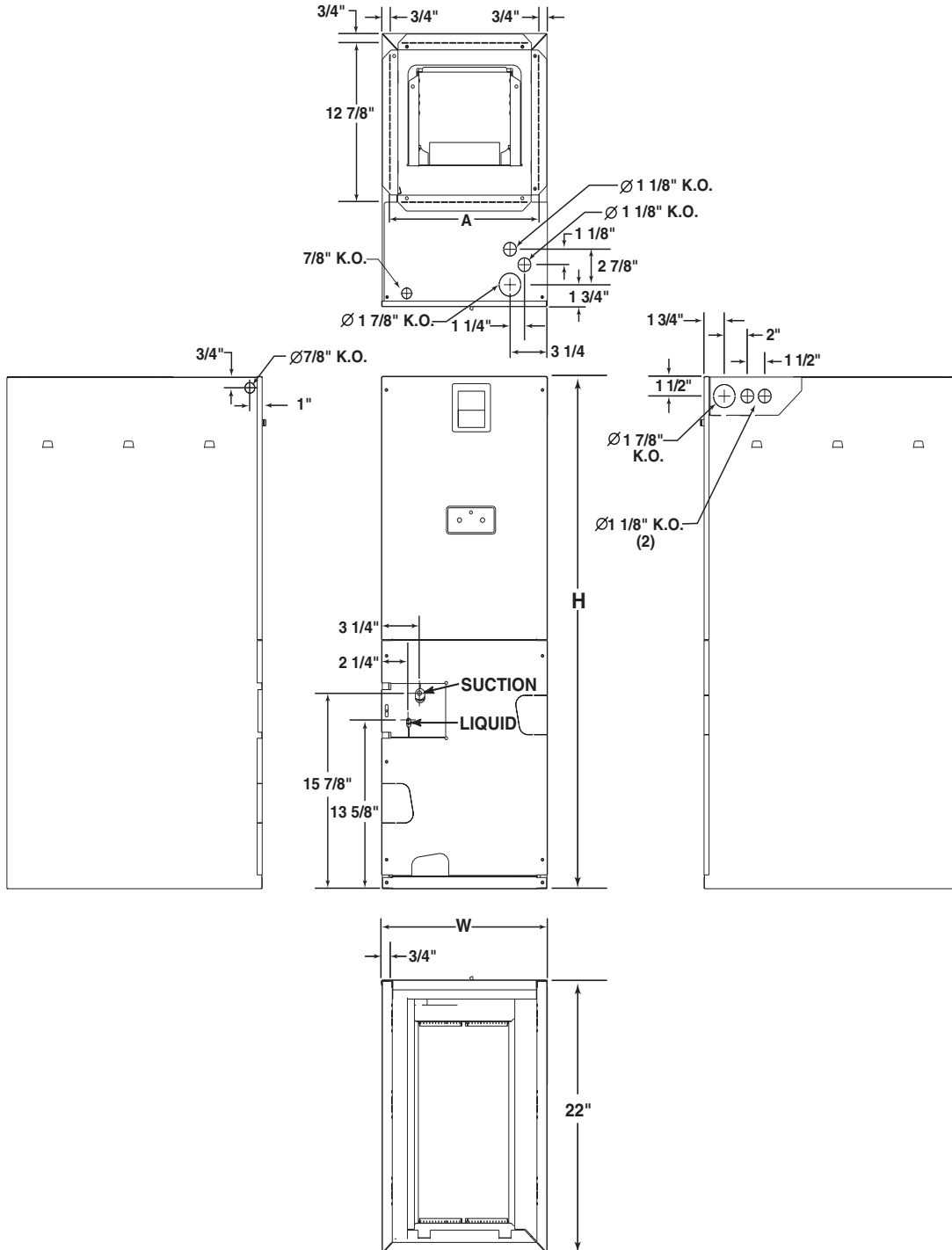
### \*\*240V 3-Phase Electric Heat Kits

KW	No. of Stages	Approved for Cabinet	Order Number	
			with Circuit Breaker(s)	w/o Circuit Breaker(s)
9	1	B, C	917449	N/A
15	1	B, C	917450	N/A

\*\*Not for use with 115 Volt units

# DIMENSIONS

Model Number B3B(M,V)-	H	W	A	Refrigerant Connections		Filter Size	Supply Air Duct Dimension
				Suction Dia.	Liquid Dia.		
024K-A	41 1/2	14 1/4	12 3/4	3/4	3/8	12 x 20 x 1	12 7/8 x 12 3/4
030K-A	41 1/2	14 1/4	12 3/4	3/4	3/8	12 x 20 x 1	12 7/8 x 12 3/4
030K-B	43 1/2	19 3/4	18 1/4	3/4	3/8	18 x 20 x 1	12 7/8 x 18 1/4
036K-B	43 1/2	19 3/4	18 1/4	3/4	3/8	18 x 20 x 1	12 7/8 x 18 1/4
042K-B	43 1/2	19 3/4	18 1/4	3/4	3/8	18 x 20 x 1	12 7/8 x 18 1/4
048K-B	43 1/2	19 3/4	18 1/4	3/4	3/8	18 x 20 x 1	12 7/8 x 18 1/4
060K-C	43 1/2	22 1/2	21	7/8	3/8	20 x 20 x 1	12 7/8 x 21
062K-C	53 1/2	22 1/2	21	7/8	3/8	20 x 20 x 1	12 7/8 x 21
066K-C	53 1/2	22 1/2	21	7/8	3/8	20 x 20 x 1	12 7/8 x 21



# SYSTEM AIR FLOW DATA

Unit	HP	Speed	ESP ("H2O)	CFM	
				Low	Med High
024K-A	1/5 HP 10 X 6	3	0.1	620	750
			0.2	580	730
			0.3	520	680
			0.4	460	630
			0.5	400	580
030K-A	1/3 HP 10 X 6	3	0.1	860	1100
			0.2	840	1090
			0.3	800	1040
			0.4	750	990
			0.5	720	950
030K-B	1/3 HP 10 X 8	3	0.1	920	1230
			0.2	890	1190
			0.3	820	1120
			0.4	760	1050
			0.5	690	980
036K-B	1/3 HP 10 X 8	3	0.1	920	1230
			0.2	890	1190
			0.3	820	1120
			0.4	760	1050
			0.5	690	980
042K-B	1/3 HP 10 X 8	3	0.1	920	1230
			0.2	890	1190
			0.3	820	1120
			0.4	760	1090
			0.5	690	980
048K-B	1/2 HP 10 X 8	3	0.1	1510	1620
			0.2	1470	1580
			0.3	1390	1490
			0.4	1320	1410
			0.5	1250	1340
060K-C	3/4 HP 10 X 10	3	0.1	1840	1990
			0.2	1780	1930
			0.3	1710	1860
			0.4	1640	1790
			0.5	1570	1710
062K-C	3/4 HP 10 X 10	3	0.1	1880	2030
			0.2	1820	1970
			0.3	1750	1900
			0.4	1680	1830
			0.5	1610	1750
066K-C	3/4 HP 10 X 10	3	0.1	1880	2030
			0.2	1820	1970
			0.3	1750	1900
			0.4	1680	1830
			0.5	1610	1750

## Notes:

- 1) Airflow is shown in cfm, +/- 5%.
- 2) External static pressure is shown in inches w.c.
- 3) All airflows are measured without filter and with dry coil. For filter velocity of 300 ft./min. subtract .08" external static pressure. For wet coil, subtract .1" external static pressure.
- 4) See unit nameplate or installation instructions for maximum recommended external static pressure.

# ELECTRICAL DATA

Model Number H4HK			Standard Air Handler			Variable Speed Air Handler								
			Min. Circuit Ampacity			Max. Over-Current Protection			Min. Circuit Ampacity			Max. Over-Current Protection		
			Circuit A	Circuit B	Single Circuit	Circuit A	Circuit B	Single Circuit	Circuit A	Circuit B	Single Circuit	Circuit A	Circuit B	Single Circuit
005H-XXB	240	4.8	-	-	30.0	-	-	30	-	-	34.8	-	-	40
008H-XXB	240	7.5	-	-	44.1	-	-	50	-	-	47.8	-	-	50
010H-XXB	240	9.6	-	-	55.0	-	-	60	-	-	58.8	-	-	60
012H-XXB	240	11.6	35.2	30.2	65.4	40	40	70	39.0	30.2	69.2	40	40	70
015H-XXB	240	14.4	55.0	25.0	80.0	60	30	90	59.3	25.0	83.8	60	30	90
020H-XXB	240	19.2	55.0	50.0	105.0	60	50	125	59.3	50.0	108.8	60	50	125
005H-XXB	208	3.6	-	-	26.6	-	-	30	-	-	30.9	-	-	40
008H-XXB	208	5.6	-	-	38.8	-	-	40	-	-	43.1	-	-	50
010H-XXB	208	7.2	-	-	48.3	-	-	50	-	-	52.5	-	-	60
012H-XXB	208	8.8	31.4	26.4	57.9	40	30	60	35.2	26.4	61.6	40	30	70
015H-XXB	208	10.8	48.3	21.6	69.7	50	30	70	52.5	21.6	74.2	60	30	80
020H-XXB	208	14.4	48.3	43.3	91.5	50	50	100	52.5	43.3	95.8	60	50	100
009Q-XXB	240	9.0	-	-	32.4	-	-	35	-	-	35.8	-	-	40
015Q-XXB	240	14.4	-	-	48.7	-	-	50	-	-	52.1	-	-	60
009Q-XXB	208	6.8	-	-	28.8	-	-	30	-	-	32.2	-	-	35
015Q-XXB	208	10.8	-	-	42.9	-	-	45	-	-	46.3	-	-	50



We Encourage Professionalism



Through Technician Certification by NATE



CERTIFICATION APPLIES ONLY WHEN THE COMPLETE SYSTEM IS LISTED WITH ARI

Westinghouse products are manufactured and distributed by NORDYNE.

and Westinghouse are trademarks of Westinghouse Electric Corporation and used under license to NORDYNE.

216B-0605 (Replaces 216B-0504)