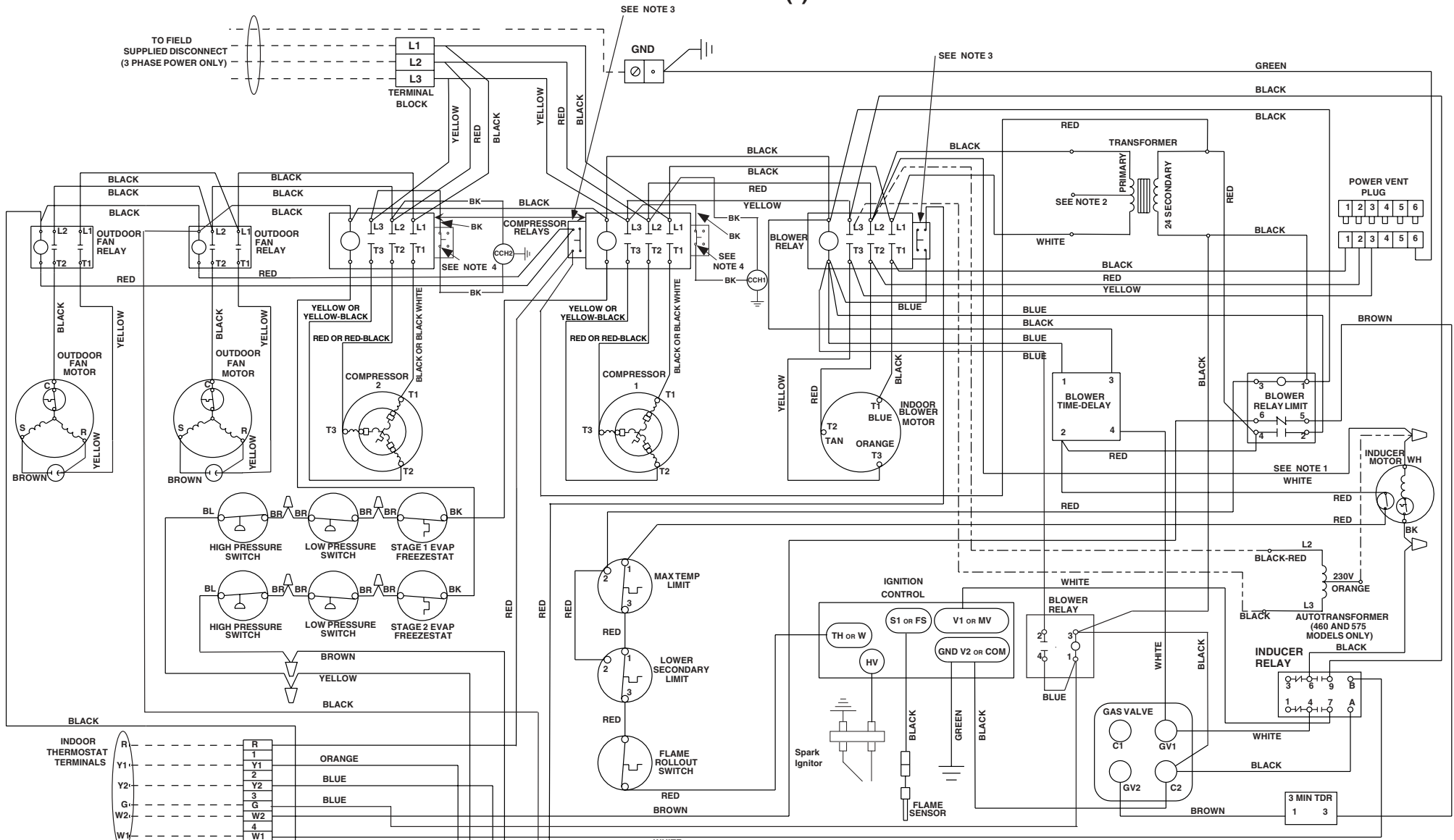


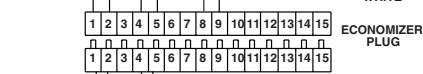
WIRING DIAGRAM

(*R4G*-120* Series 208-230/460/575 Volt Three Phase 60 Hz.



CONTROL WIRING LEADS
Refer to Installation Instructions for Connections to Indoor Thermostat

LOW VOLTAGE TERMINAL (LVT)



FACTORY JUMPERS w/no ECONOMIZER

FIELD WIRING	---
FACTORY WIRING	—
AUTOTRANSFORMER	- - - -

- NOTES:**
- 1) THIS WIRE REPLACED BY AUTOTRANSFORMER WHEN USED.
 - 2) FOR 120C MODELS ONLY. FOR 208 VAC OPERATION REMOVE WIRE AT 240V TAP AND PLACE ON 208V TAP.
 - 3) WIRES ATTACHED TO NORMALLY OPEN CONTACTS OF AUXILIARY SWITCH.
 - 4) WIRES ATTACHED TO NORMALLY CLOSED CONTACTS OF AUXILIARY SWITCH.



7105040
(Replaces 710133B)