

# WIRING DIAGRAM

Convertible Packaged Heat Pump

208/230 Volt

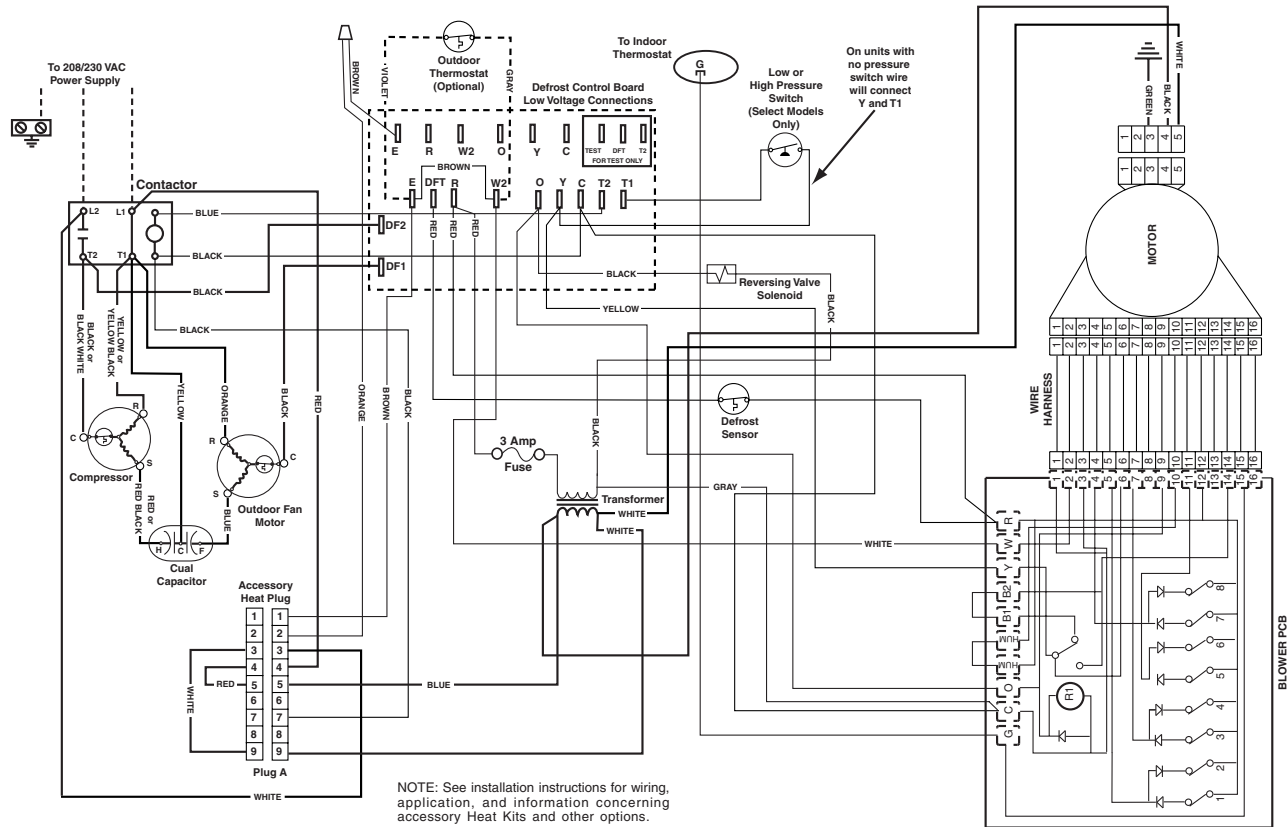
Single Phase

60Hz

|                |       |
|----------------|-------|
| Field Wiring   | ----- |
| Factory Wiring | ————— |
| Low Voltage    | ————— |
| High Voltage   | ————— |

## DEFROST BOARD OPERATION:

- 1 CLOSURES DURING DEFROST. RATING: 1 A MAXIMUM
- 2 OPENS DURING DEFROST. RATING: 2 HP AT 230 VAC MAXIMUM
- 3 CLOSURES WHEN "Y" IS ENERGIZED. OPEN WHEN "Y" IS DEENERGIZED. PROVIDES "OFF" DELAY TIME OF 5 MIN WHEN "Y" IS DEENERGIZED.
- 4 WITH DFT CLOSED AND "Y" ENERGIZED, COMPRESSOR RUN TIME IS ACCUMULATED. OPENING OF DFT DURING DEFROST OR INTERVAL PERIOD RESETS THE INTERVAL TO 0.



## NOTES:

1. Disconnect all power before servicing.
2. For supply connections use copper conductors only.
3. Not suitable on systems that exceed 150 V to ground.
4. If any of the original wire as supplied with the unit must be replaced, it must be replaced with wiring material having a temperature rating of at least 105°C.
5. For supply wire ampacities and overcurrent protection, see unit rating plate.

1. Couper le courant avant de faire letrien.
2. Employez uniquement des conducteurs en cuivre.
3. Ne convient pas aux installations de plus de 150 V a la terre.



7104020