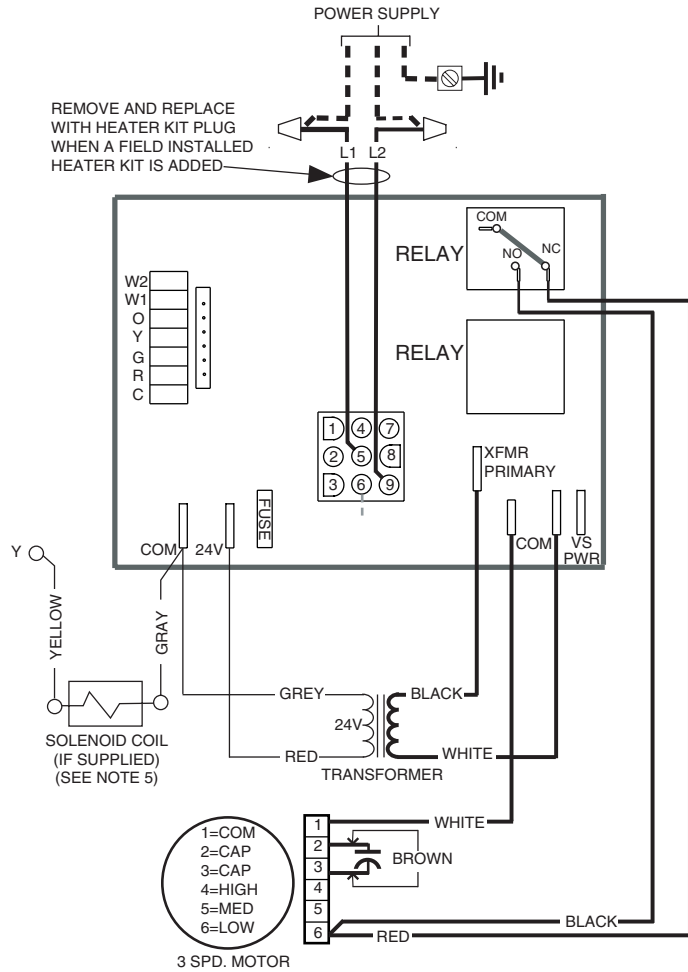


WIRING DIAGRAM

Air Handler



NOTES:

1. The blower motor speed tap connection may not be as shown. See the Installation Instructions.
2. Disconnect all power before servicing.
3. Transformer may have a dual voltage primary tap. Match the tap position with the supply voltage used.
4. If the internal wiring is replaced, use only 105°C copper wire of the same gauge.
5. Solenoid on 066 models only.

BLOWER MOTOR PLUG

- | | |
|----------|---|
| 1 = COM | 1 |
| 2 = CAP | 2 |
| 3 = CAP | 3 |
| 4 = HIGH | 4 |
| 5 = MED | 5 |
| 6 = LOW | 6 |

Legend

Field Wiring	-----
Factory Wiring	—————
Low Voltage	—————
High Voltage	—————



710291A

710291A (Replaces 7102910)