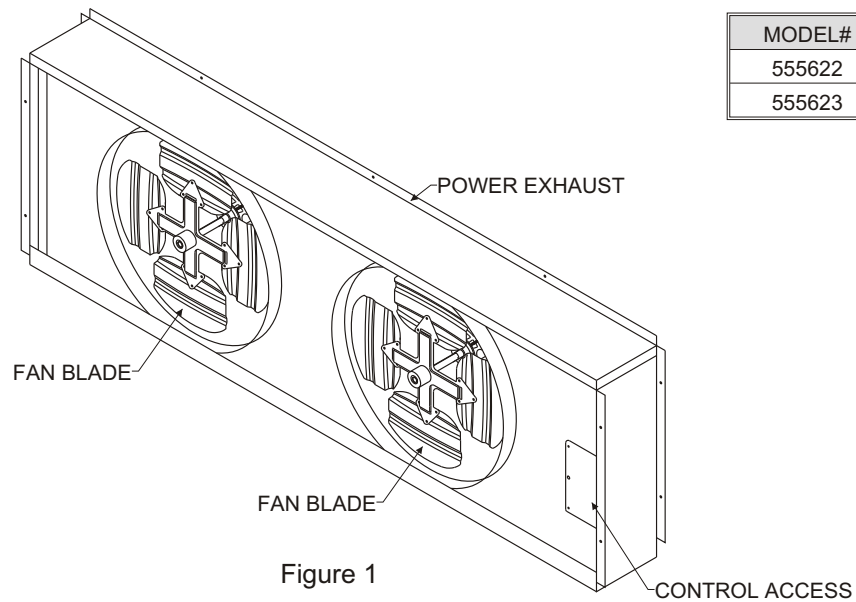


# INSTALLATION INSTRUCTION

## INSTALLATION INSTRUCTIONS FOR 555622 / 555623 POWER EXHAUST

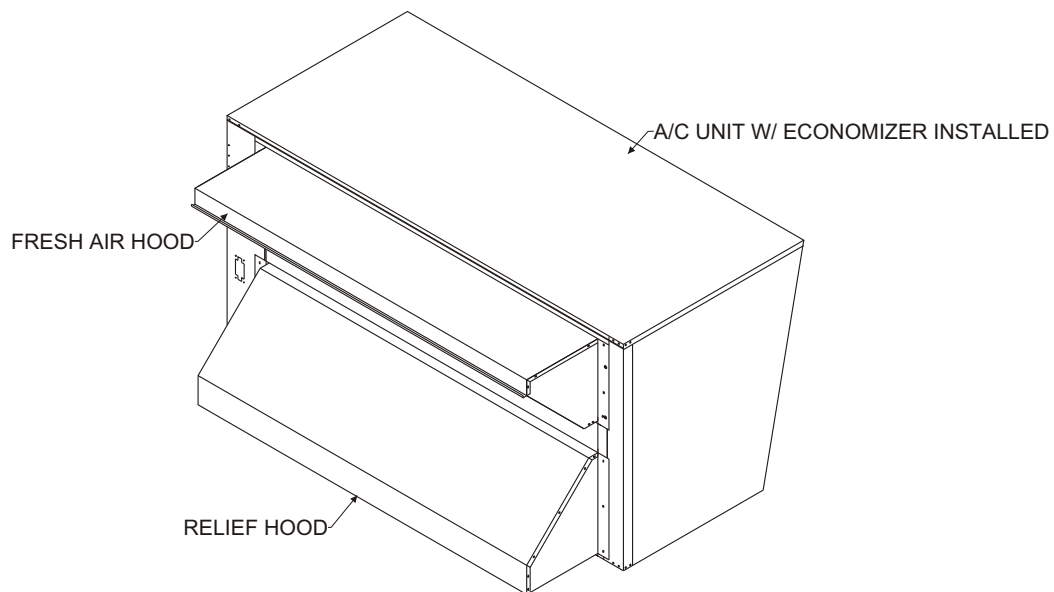
656B-0604



### Step 1:

Check for correct number of parts. See list below.

- 1 - Power Exhaust Assembly
- 1 - Hardware Bag
  - 11 - #10 -16 x 1/2" Type A Screws
  - 1 - 1 3/4" Bushing



### Step 2:

Disconnect all power to unit.

### Step 3:

Remove the relief hood of economizer and retain the screws.

# INSTALLATION INSTRUCTION

## INSTALLATION INSTRUCTIONS FOR 555622 / 555623 POWER EXHAUST

### Step 4:

Install the power exhaust where relief hood was mounted using same holes and screws from step 3.

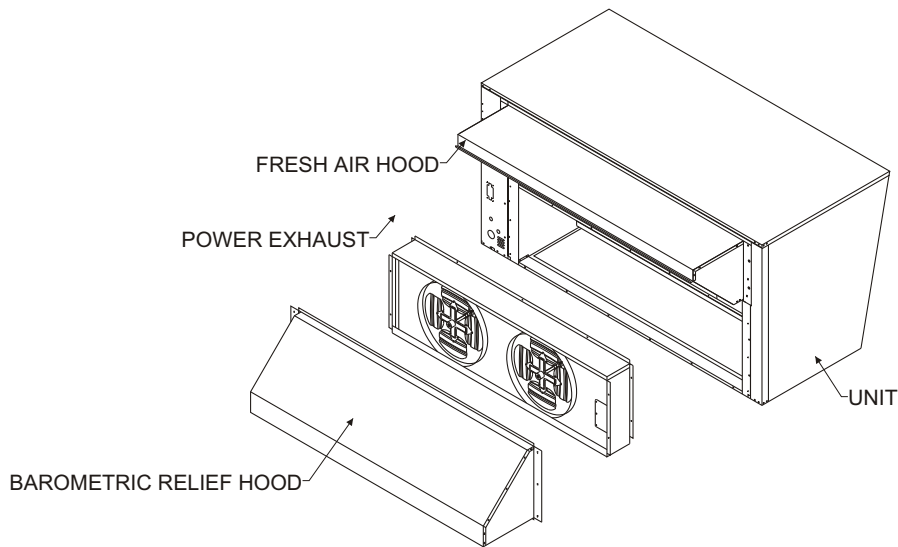


Figure 3

### Step 5:

Locate plug on the side of economizer under economizer controls

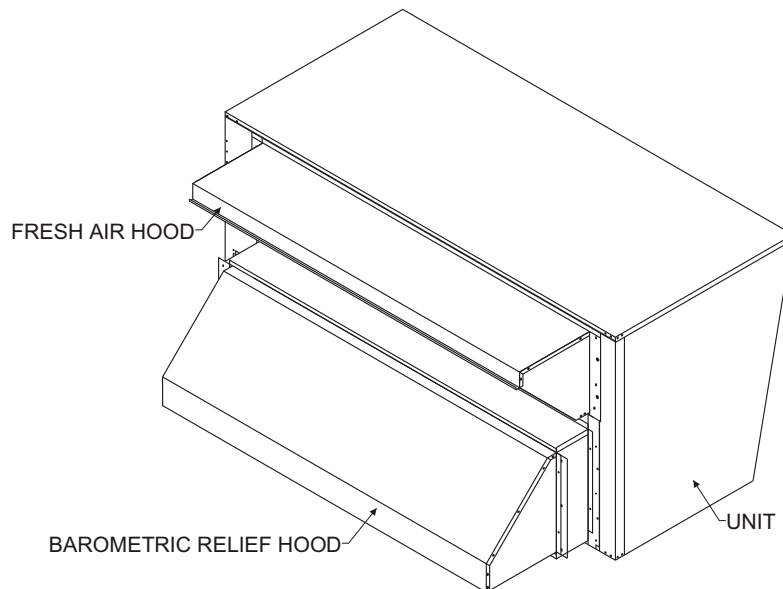


Figure 4

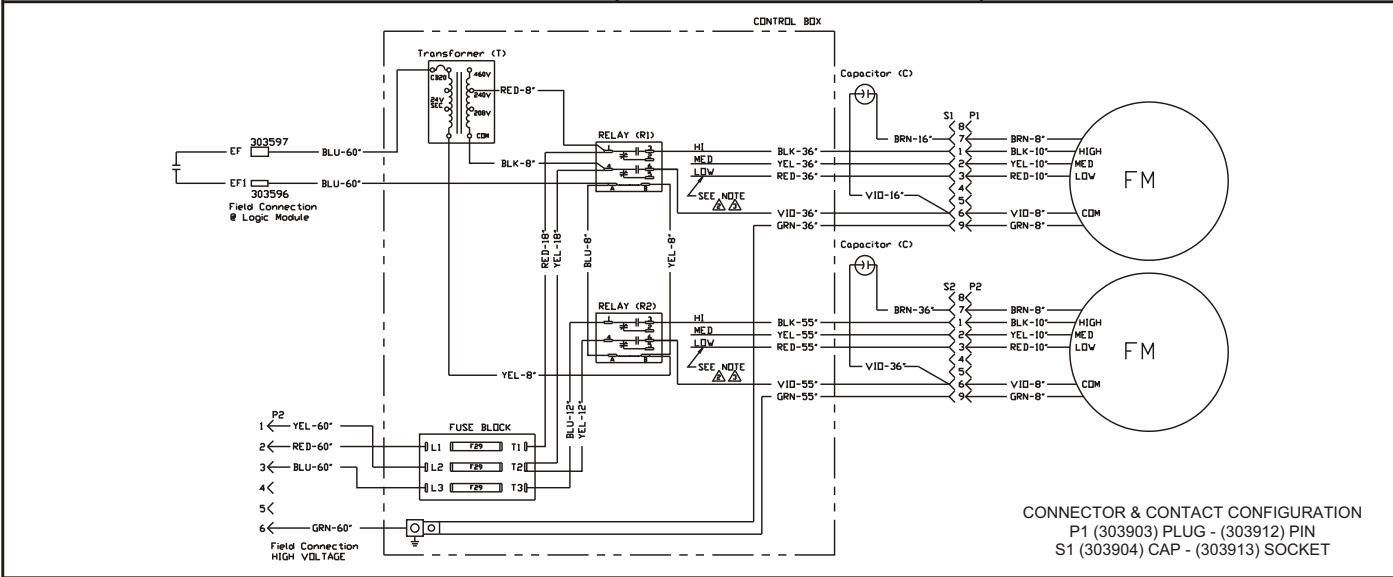
### Step 6:

Route power exhaust harness through economizer side panel and connect as per diagram.

### Step 7:

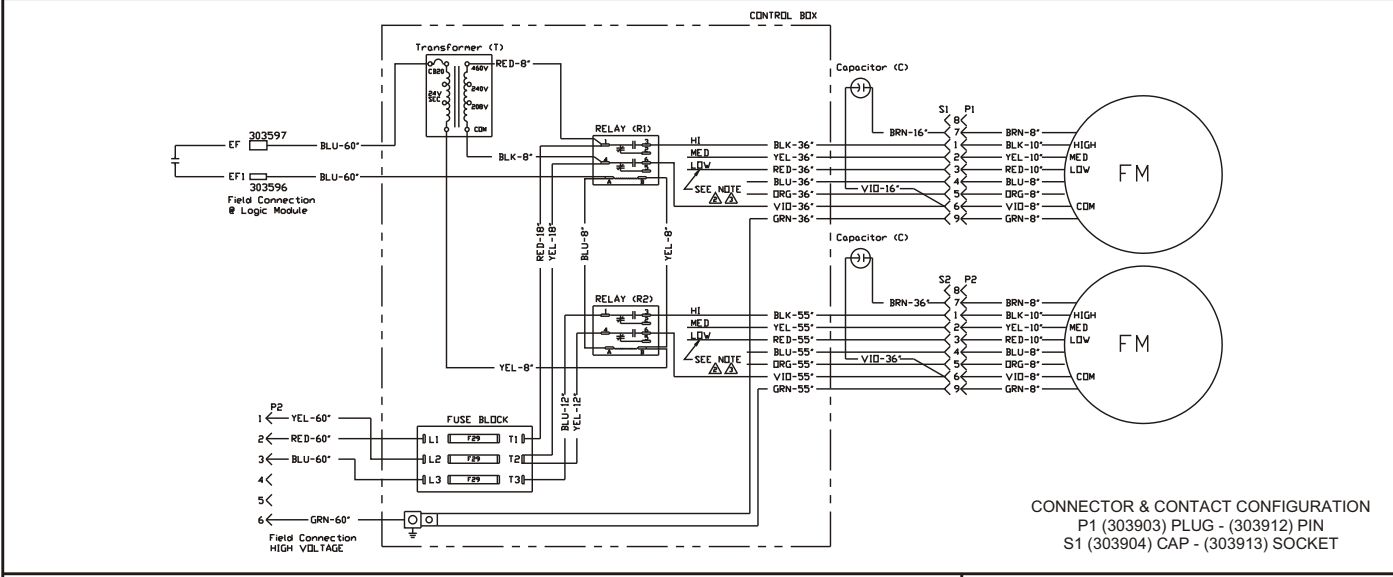
Reinstall economizer relief hood over front of power exhaust using screws provided.

HARNESS DETAIL	COMPONENT CODE	WIRE COLOR CODE			
<p>HARNESS LEADS ARE 14 GA. WIRE WITH NO END DESIGNATION</p>	<p>C Capacitor ES1 &amp; ES2 End Switch FM Fan Motor F29 Fuse P1 &amp; P2 Fan Plug Male R1 &amp; R2 Relay S1 &amp; S2 Control Box Female T Transformer</p>	<p>BLK Black BRN Brown GRY Gray RED Red YEL Yellow</p>	<p>BLU Blue GRN Green ORG Orange VIO Violet</p>		



<p>Notes:</p> <ol style="list-style-type: none"> <li>1. Connect harness leads to load side of blower contactor.</li> <li>2. Power Exhaust wired for <b>High</b> speed.</li> <li>3. For <b>Med</b> speed disconnect <b>BLK</b> at relay (3), connect <b>BLU</b> at relay (3).</li> <li>4. For <b>Low</b> speed disconnect <b>BLK</b> at relay (3), connect <b>RED</b> at relay (3).</li> </ol> <p><b>Be sure all leads from motor have been covered with tape.</b></p>	<p>208-230 Volt 3 Phase Power Exhaust for R4GM 150-180</p>	
	<table border="1" style="width: 100%;"> <tr> <td style="width: 50%;"> <p>Rooftop Systems, Inc. 2405 McIver Lane Carrollton, Texas 75006 Phone (972) 247-7447 Fax (972) 243-0940</p> </td> <td style="width: 50%;"> <p>Date: September 8, 2004 Supercedes: 08-20-04 Drawn by: Unit # 555622 Diagram# 474651013W</p> </td> </tr> </table>	<p>Rooftop Systems, Inc. 2405 McIver Lane Carrollton, Texas 75006 Phone (972) 247-7447 Fax (972) 243-0940</p>
<p>Rooftop Systems, Inc. 2405 McIver Lane Carrollton, Texas 75006 Phone (972) 247-7447 Fax (972) 243-0940</p>	<p>Date: September 8, 2004 Supercedes: 08-20-04 Drawn by: Unit # 555622 Diagram# 474651013W</p>	

HARNESS DETAIL	COMPONENT CODE	WIRE COLOR CODE			
<p>HARNESS LEADS ARE 14 GA. WIRE WITH NO END DESIGNATION</p>	<p>C Capacitor ES1 &amp; ES2 End Switch FM Fan Motor F29 Fuse P1 &amp; P2 Fan Plug Male R1 &amp; R2 Relay S1 &amp; S2 Control Box Female T Transformer</p>	<p>BLK Black BRN Brown GRY Gray RED Red YEL Yellow</p>	<p>BLU Blue GRN Green ORG Orange VIO Violet</p>		



<p>Notes:</p> <ol style="list-style-type: none"> <li>1. Connect harness leads to load side of blower contactor.</li> <li>2. Power Exhaust wired for <b>High</b> speed.</li> <li>3. For <b>Med</b> speed disconnect <b>BLK</b> at relay (3), connect <b>BLU</b> at relay (3).</li> <li>4. For <b>Low</b> speed disconnect <b>BLK</b> at relay (3), connect <b>RED</b> at relay (3).</li> </ol> <p><b>Be sure all leads from motor have been covered with tape.</b></p>	<p>460 Volt 3 Phase Power Exhaust for R4GM 150-180</p>	
	<table border="1" style="width: 100%;"> <tr> <td style="width: 50%;"> <p>Rooftop Systems, Inc. 2405 McIver Lane Carrollton, Texas 75006 Phone (972) 247-7447 Fax (972) 243-0940</p> </td> <td style="width: 50%;"> <p>Date: September 8, 2004 Supercedes: 08-20-04 Drawn by: Unit # 555623 Diagram# 474651033W</p> </td> </tr> </table>	<p>Rooftop Systems, Inc. 2405 McIver Lane Carrollton, Texas 75006 Phone (972) 247-7447 Fax (972) 243-0940</p>
<p>Rooftop Systems, Inc. 2405 McIver Lane Carrollton, Texas 75006 Phone (972) 247-7447 Fax (972) 243-0940</p>	<p>Date: September 8, 2004 Supercedes: 08-20-04 Drawn by: Unit # 555623 Diagram# 474651033W</p>	