

Motor Settings

B-Cabinet

CFM	Switch Number			
	1	2	3	4
720	0	0	0	1
800	0	0	0	0
860	1	0	0	1
885	0	0	1	0
960	1	0	0	0
1060	1	0	1	0
1125	0	1	0	1
1185	1	1	0	1
1250	0	1	0	0
1315	1	1	0	0
1375	0	1	1	0
1450	1	1	1	0

**NOTE: 1 = ON,
0 = OFF**

**Minimum Electric
Heat Air-Flow
(all models)**

Nom. KW	CFM	Switch Number	
		5	6
0-5	700	0	0
6-10	800	1	0
11-15	950	0	1
16-20	1100	1	1

C-Cabinet

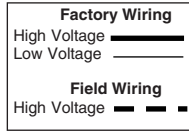
CFM	Switch Number			
	1	2	3	4
1075	0	0	0	1
1140	1	0	0	1
1225	0	0	0	0
1300	1	0	0	0
1380	0	0	1	0
1465	1	0	1	0
1555	0	1	0	1
1665	1	1	0	1
1775	0	1	0	0
1900	1	1	0	0
2000	0	1	1	0
2150	1	1	1	0

**Delay
Settings
(all models)**

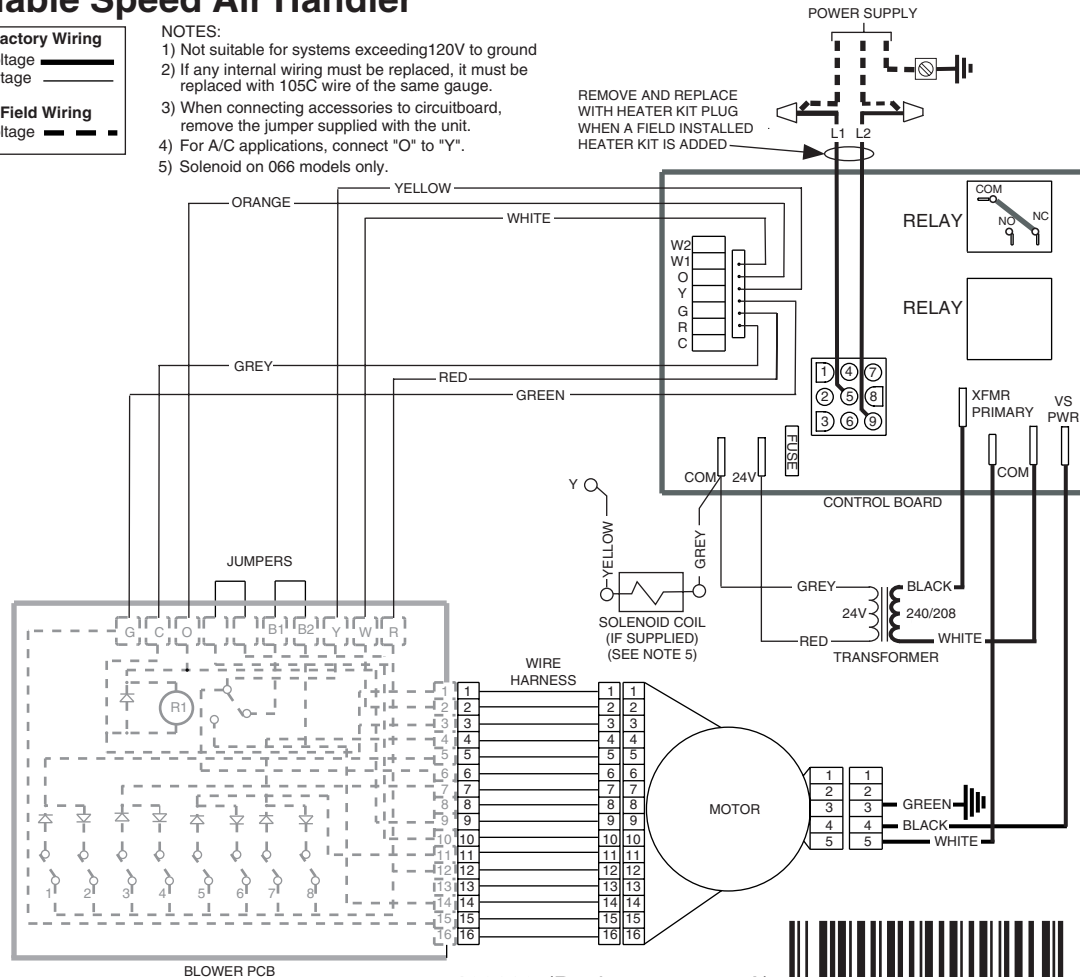
Delay Desc.	Switch Number	
	7	8
Delay A	0	0
Delay B	0	1
No Delay	1	0
De-Hum	1	1

WIRING DIAGRAM

Variable Speed Air Handler



- NOTES:
- 1) Not suitable for systems exceeding 120V to ground
 - 2) If any internal wiring must be replaced, it must be replaced with 105C wire of the same gauge.
 - 3) When connecting accessories to circuitboard, remove the jumper supplied with the unit.
 - 4) For A/C applications, connect "O" to "Y".
 - 5) Solenoid on 066 models only.



7103660 (Replaces 710272A)

