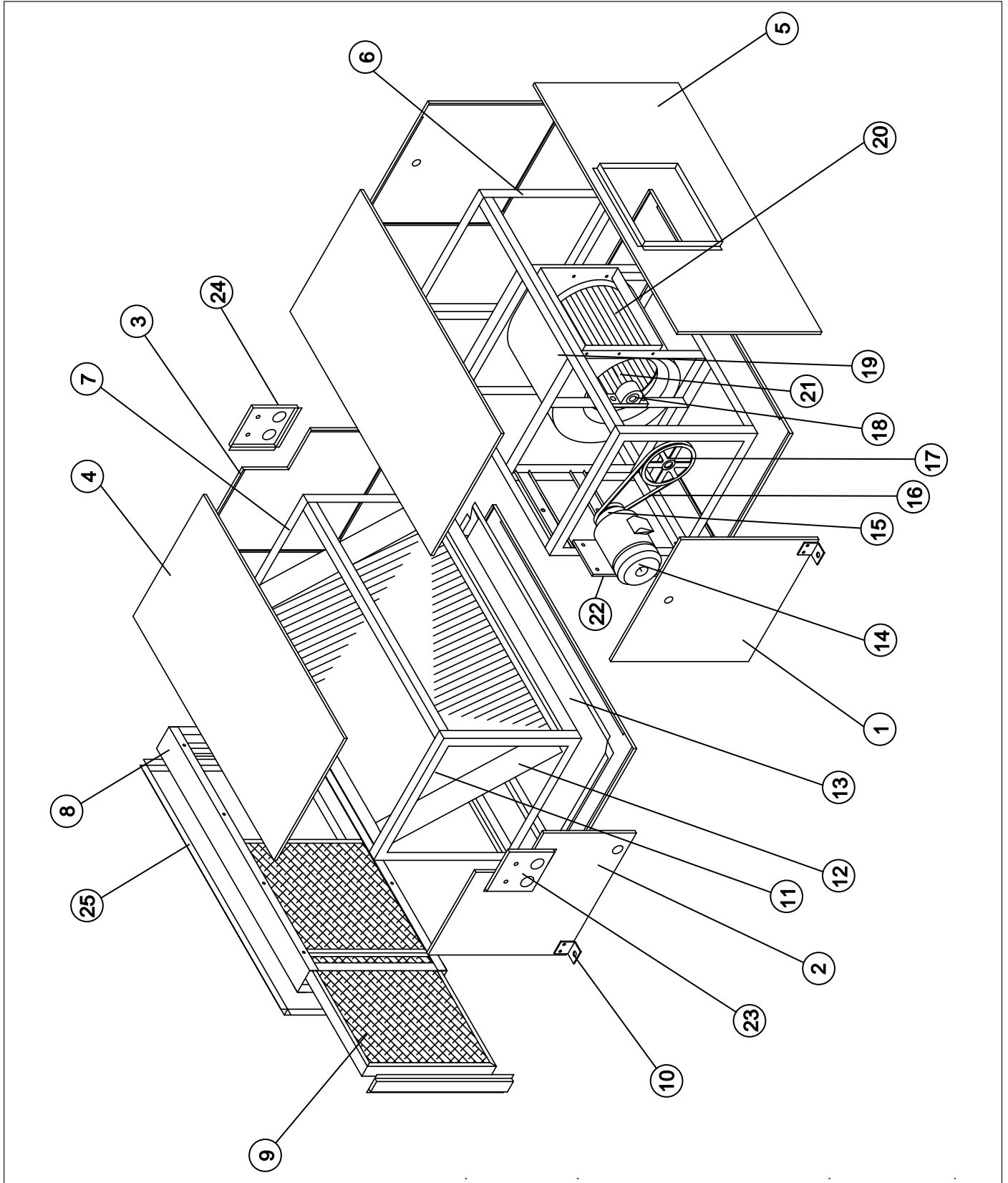


REPLACEMENT PARTS LIST

**7.5 and 10 Ton Light Commercial
Air Handlers B3SM Series**



REPLACEMENT PARTS LIST			B3SM-090*		B3SM-120*	
Item	Part #	Description	208/230 V	208-230/460 V	208/230 V	208-230/460 V
			1 Ph. / 60 Hz.	3 Ph. / 60 Hz.	1 Ph. / 60 Hz.	3 Ph. / 60 Hz.
1	FG0500166	Blower Access Panel	2	2		
	FG0500208				2	2
2	FG0500167	Coil Access Panel- Front	1	1		
	FG0500209				1	1
3	FG0500244	Coil Access Panel- Rear	1	1		
	FG0500257				1	1
4	FG0500165	Top and Bottom Panel	4	4		
	FG0500207				4	4
5	FG0500220	Blower Outlet Panel	1	1		
	FG0500226				1	1
6	FG0500119	Frame Assembly- Blower Section	1	1		
	FG0500222				1	1
7	FG0500238	Frame Assembly- Coil Section	1	1		
	FG0500223				1	1
8	FG0500154	Frame Assembly- Filter Section	1	1		
	FG0500197				1	1
9	FG0500163	Filters, Permanent, 16" x 20" x 2" (Factory)	3	3		
	668940-	Filters, Pleated Disposable, 16" x 20" x 2"				
	FG0500206	Filters, Permanent, 16" x 25" x 2" (Factory)			3	3
	668932-	Filters, Pleated Disposable, 16" x 25" x 2"				
10	FG0500168	Hanger Brackets	4	4	4	4
11	FG0501006	Expansion Valve TCLE 10 HW (Not shown)	1	1		
	FG0501004	Expansion Valve TCLE 5 HW (Not shown)			2	2
12	FG0500101	Evaporator Coil Assembly	1	1		
	FG0500135				1	1
13	FG0500221	Drain Pan Assembly	1	1		
	FG0500229				1	1
14	621964-	Motor, 208-230V / 1 Ph. / 60 Hz., 1.5 HP	1			
	621965-	Motor, 208-230/460V / 3 Ph. / 60 Hz., 1.5 HP		1		
	621966-	Motor, 208-230V / 1 Ph. / 60 Hz., 2 HP			1	
	621967-	Motor, 208-230/460V / 3 Ph. / 60 Hz., 2 HP				1
15	667314-	Sheave, Motor (Adjustable)	1	1	1	1
16	669370-	Belt, Blower Drive, A36	1	1		
	669371-	Belt, Blower Drive, A41			1	1
17	FG0026012	Pulley, Blower Drive	1	1		
	FG0026013				1	1
18	FG0001010	Bearing, Plummer Block	2	2	2	2
19	FG0665001	Blower Housing, 12" x 12"	1	1		
	FG0661014	Blower Housing, 15" x 15"			1	1
20	FG0605004	Blower Wheel, 12" x 12"	1	1		
	FG0601084	Blower Wheel, 15" x 15"			1	1
21	FG0500232	Shaft, 25mm Dia. X 640mm	1	1		
	FG0500189	Shaft, 25mm Dia. X 702mm			1	1
22	FG0500169	Motor Mounting Plate	1	1	1	1
23	FG0500245	Tube Header Plate, Front	1	1		
	FG0500258				1	1
24	FG0500246	Tube Header Plate, Rear	1	1		
	FG0500259				1	1
25	FG0500241	Supply Flange Assembly	1	1		
	FG0500248				1	1

7081660



7081660

O'Fallon, MO

NORDYNE

Specifications and illustrations subject to change
without notice and without incurring obligations.
Printed in U.S.A. (09/02)