

Bonnet Control Switch Kit

Installation Instructions

For B2VM Air Handlers

GENERAL

The optional bonnet control and relay switch is recommended in variable speed heat-pump systems where supply air temperatures may drop below a comfortable level during normal operation. The bonnet control switch senses when the supply air temperature is below a preset comfort level (set by installer) and sends a signal to the motor to reduce the airflow. The supply air temperature increases when the airflow is reduced. Airflow will resume to normal levels if electric strip heat is energized. The air handler is pre-programmed to accept bonnet switch inputs. Remove jumper connector "J1" on the thermostat input board when installing the bonnet switch. The bonnet switch will not affect the cooling cycle.

NOTE: The bonnet control switch may not be used with a dual capacity outdoor unit.

INSTALLATION

Mount the bonnet control switch in the supply air duct as directed in separate instructions included with kit. Locate the bulb close to the unit, but not within the sight of the heating elements. Wire the bonnet control switch to the thermostat input board and bonnet switch relay through the low-voltage wire entrance in the air handler as shown in Figure 1, and remove jumper connector, "J1".

NOTE: Your kit should include the bonnet control switch and a 24V relay with normally open contacts.

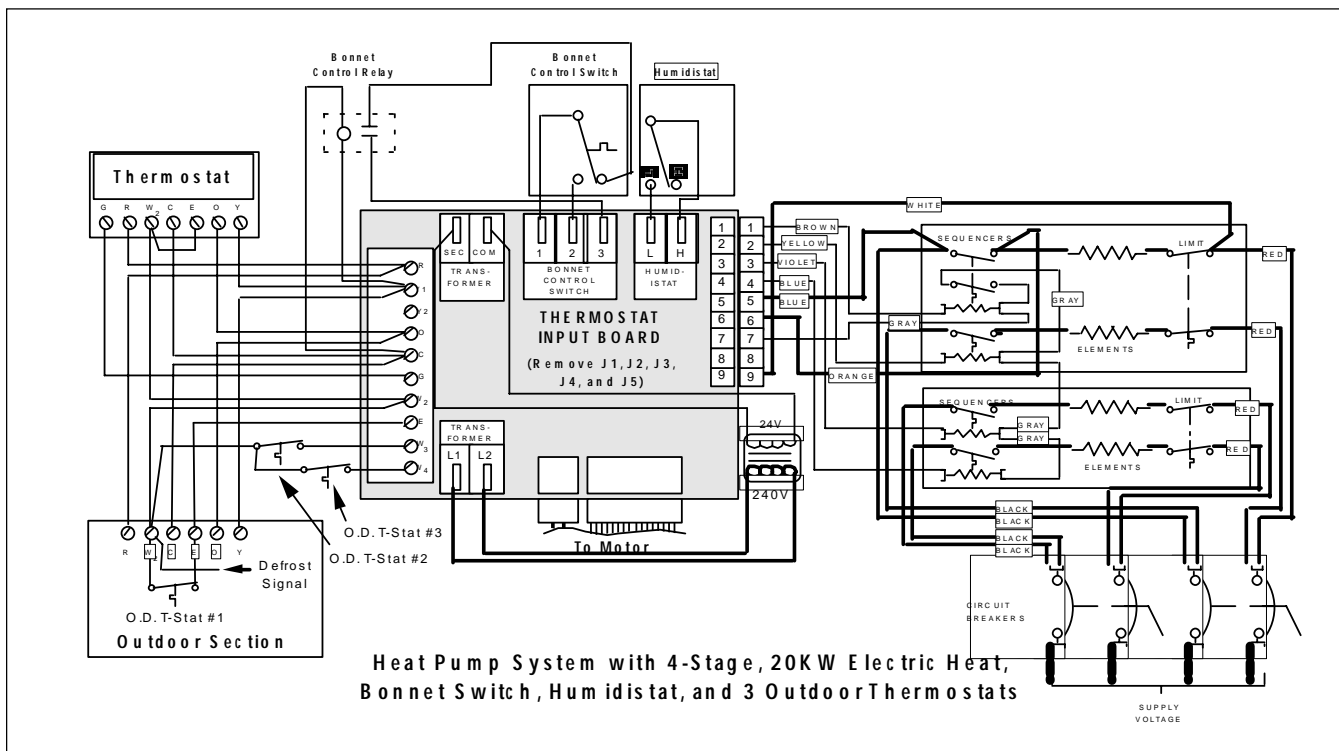


Figure 1

These instructions are intended to assist qualified individuals experienced in the proper installation of heating and/or air conditioning appliances. Some local codes require licensed installation/service personnel for this type equipment. All installations must be in accordance with these instructions and with all applicable national and local codes and standards.