

Universal Compressor Start Kit

Installation Instructions

No. 912933

These instructions are primarily intended to assist qualified individuals experienced in the proper installation of this appliance. Some local codes require licensed installation/service personnel for this type of equipment. Read all instructions carefully before starting the installation.

For Single Package Gas/Electric Models, use the horizontal bracket as shown in Figure 1.

For Single Package Series Air Conditioners and Heat Pumps use the vertical bracket as shown in Figure 2.

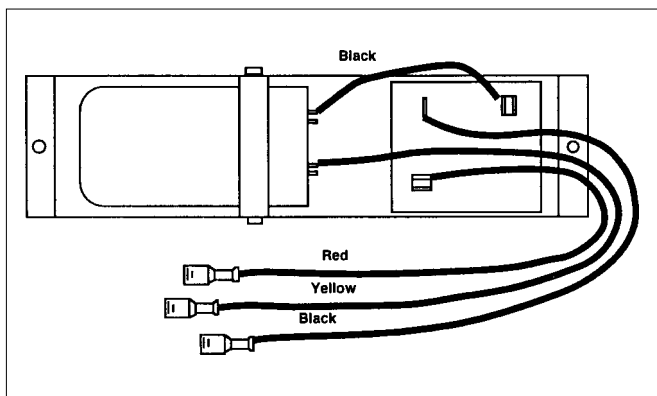


Figure 1

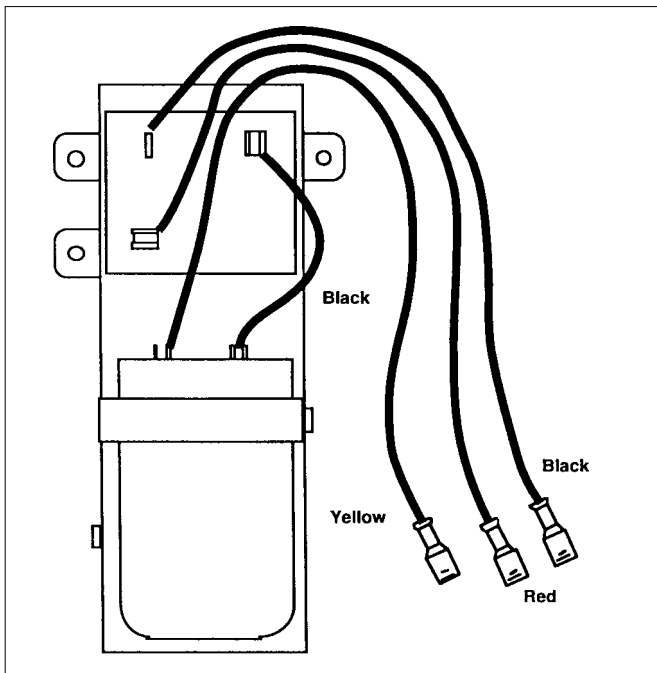


Figure 2

For Split System Air Conditioners and Heat Pumps no bracket is necessary.

This compressor start kit includes the following items:

<u>Quantity</u>	<u>Description</u>
1	Compressor Start Assembly
2	Mounting Brackets
1	Plastic Tie-Wrap
4	Screws
1	Installation Instructions

INTRODUCTION

Start Kits are designed to provide additional starting torque for air conditioners or heat pumps equipped with compressors using a permanent split capacitor (PSC) single phase motor. This type of motor does not require a start kit under normal operating conditions, but, because low starting torque is inherent with PSC motors, special conditions such as low voltage and exceptionally high operating temperatures, short thermostat cycles, etc., can interfere with compressor starting.

INSTALLATION SEQUENCE

1. Turn the power off to the unit.

! WARNING:

Turn off the power before servicing controls. Severe electrical shock may result unless the power is turned off.

2. Decide which application is required for the unit, for the starting relay is position-sensitive.
3. Attach the compressor start assembly to the proper bracket using the capacitor strap and screws provided. For split system units omit this step.

4. Remove the control panel cover.
5. Attach the kit to the designated location in the control panel with the screws provided. For split system units mount capacitor and relay at the designated locations inside the control panel. The orientation of the relay and capacitor will be as shown in Figure 1.
6. Connect the "Black" wire to the terminal on the load side of the normally open pole of the contactor. See Figure 3.
7. Connect the "Red" wire to the compressor capacitor terminal marked "H" or "HERM".
8. Connect the "Yellow" wire to the compressor capacitor terminal marked "C" or COMMON.
9. Route the starting kit wires along the side of the existing wiring and tie-wrap all of the wires together with the tie-wrap provided.
10. After installing the compressor start kit, place the enclosed wiring diagram on the control panel cover next to the unit wiring diagram.
11. Replace the control panel cover.
12. Restore the power to the unit.
13. Be certain to check unit operation with the start kit installed.
14. Leave these Installation Instructions with the unit/homeowner.

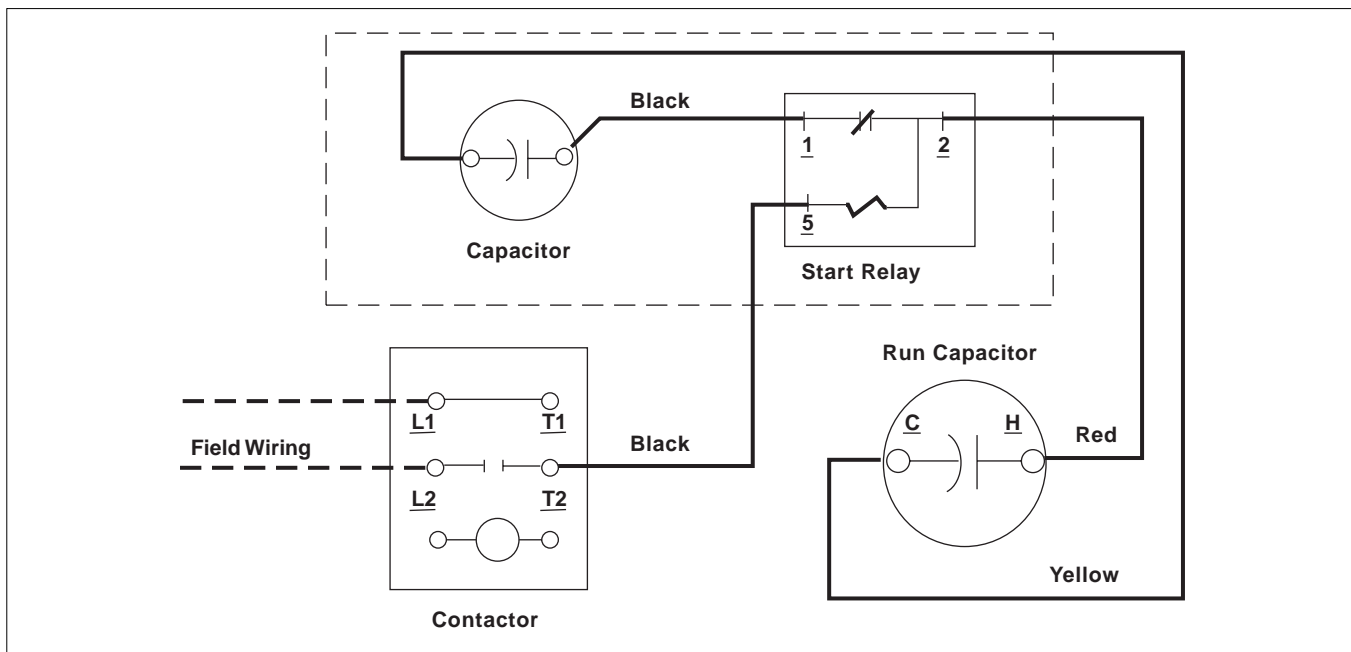


Figure 3